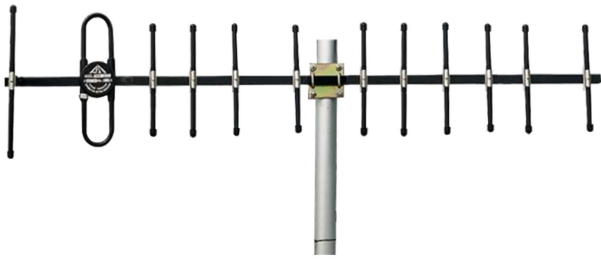




## Directional Yagi Antenna



- Model: FTD-03BM12V12A
- Name: Directional Yagi Antenna
- Freq.Range: 300 to 390 MHz
- Communications system: VHF/UHF, Wireless data transmission station, Wireless trunking communication system
- Application scenario: Point to point, Point to multipoint, Client antenna, Long-distance communication, Wireless data and image transmission

Tip: Pictures are for reference only.  
Please refer to physical objects.

| Electrical Specifications |                        |
|---------------------------|------------------------|
| Freq.Range-MHz            | 300 to 390             |
| Bandwidth-MHz             | 16                     |
| Unit                      | 12                     |
| Polarization              | Vertical or Horizontal |
| Gain-dBi                  | 12                     |
| Vertical Beamwidth-°      | 32                     |
| Horizontal Beamwidth-°    | 36                     |
| F/B-dB                    | ≥ 18                   |
| Impedance-Ω               | 50                     |
| VSWR                      | ≤ 1.5                  |
| Max.Power-W               | 100                    |

| Mechanical Specifications  |                        |
|----------------------------|------------------------|
| Connector                  | N female or customized |
| Connector Position         | Cable outgoing         |
| Length-M                   | About 1.8              |
| Weight-KG                  | About 1.8              |
| Radome material            | Aluminium alloy        |
| Operational Temperature-°C | -40 to 65              |
| Storage Temperature-°C     | -55 to 85              |
| Relative Humidity-%        | 5 to 95                |
| Rated Wind Velocity-M/S    | 60                     |
| Mounting way               | Mast                   |
| Mast Diameter-MM           | About Φ30 to 50        |



## Installation Demonstrations

