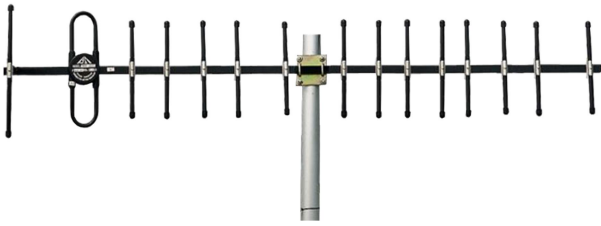




Directional Yagi Antenna



- Model: FTD-03BM13V15A
- Name: Directional Yagi Antenna
- Freq.Range: 300 to 390 MHz
- Communications system: VHF/UHF,
Wireless data transmission station,
Wireless trunking communication system
- Application scenario: Point to point,
Point to multipoint, Client antenna,
Long-distance communication,
Wireless data and image transmission

Tip: Pictures are for reference only.
Please refer to physical objects.

Electrical Specifications	
Freq.Range-MHz	300 to 390
Bandwidth-MHz	16
Unit	15
Polarization	Vertical or Horizontal
Gain-dBi	13
Vertical Beamwidth-°	30
Horizontal Beamwidth-°	30
F/B-dB	≥ 18
Impedance-Ω	50
VSWR	≤ 1.5
Max.Power-W	100

Mechanical Specifications	
Connector	N female or customized
Connector Position	Cable outgoing
Length-M	About 2.2
Weight-KG	About 2
Radome material	Aluminium alloy
Operational Temperature-°C	-40 to 65
Storage Temperature-°C	-55 to 85
Relative Humidity-%	5 to 95
Rated Wind Velocity-M/S	60
Mounting way	Mast
Mast Diameter-MM	About Φ30 to 50



Installation Demonstrations

