



## Directional Flat Panel Antenna



- Model: FTD-04PB05DP100
- Name: Directional Flat Panel Antenna
- Freq.Range: 450 to 470 MHz
- Communications system: VHF/UHF,  
Wireless data transmission station,  
Wireless trunking communication system,  
Cellular Communication System,  
Wireless access communication system
- Application scenario: Point to point  
Point to multipoint,  
Wireless data and image transmission,  
Outdoor signal directional coverage

Tip: Pictures are for reference only.  
Please refer to physical objects.

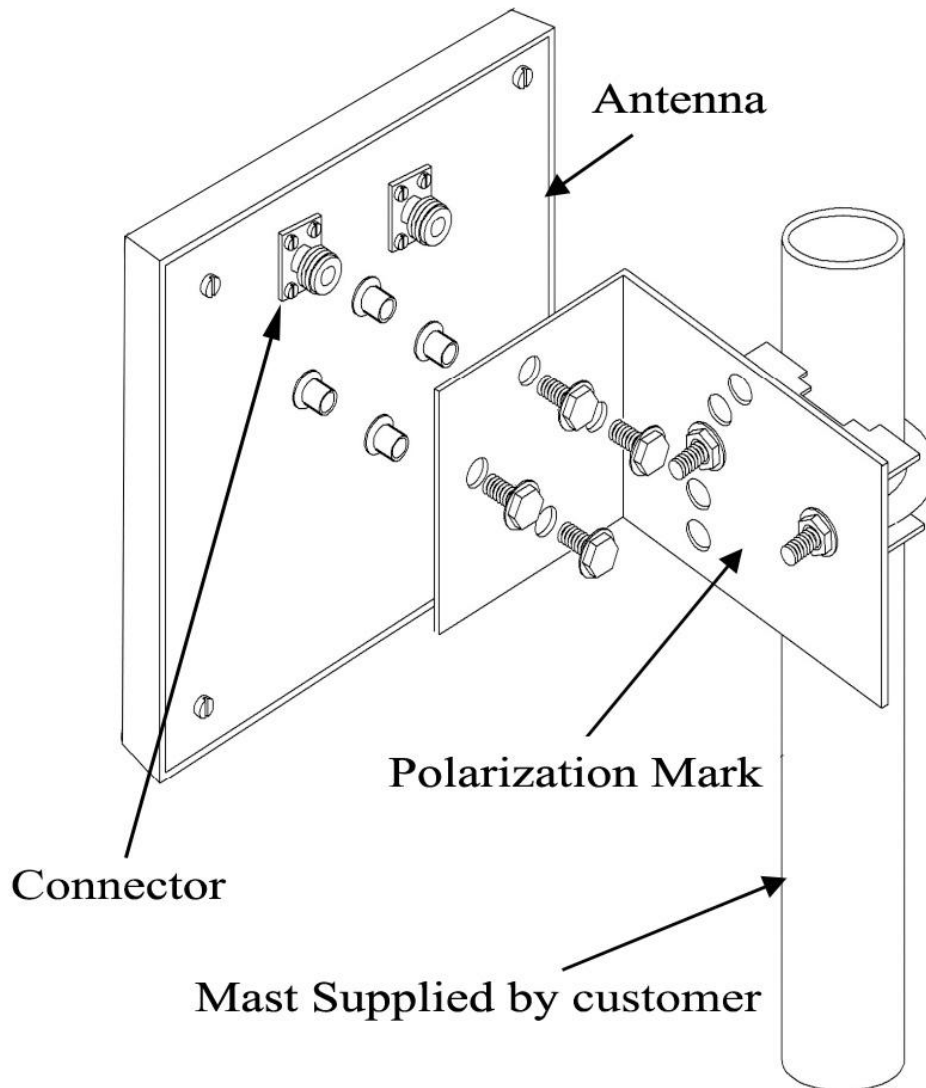
Electrical Specifications	
Freq.Range-MHz	450 to 470
Bandwidth-MHz	20
Polarization	±45°
Gain-dBi	5
Half-power beam width-°	H:100      E:100
Cross-pol-isolation-dB	≥20
F/B-dB	≥ 10
Impedance-Ω	50
VSWR	≤ 2.0
Max.Power-W	50
Lightning Protection	DC Grounded

Mechanical Specifications	
Connector	2×N female
Connector Position	Back
Dimension-MM	About 190×190×40
Weight-KG	About 1
Radome material	ABS
Radome color	White
Mechanical tilt-°	0 to 30
Operational Temperature-°C	-40 to 60
Storage Temperature-°C	-55 to 85
Relative Humidity-%	5 to 95
Rated Wind Velocity-M/S	60
Mounting way	Mast
Mast Diameter-MM	About Φ35 to 50



## Installation Demonstrations



## Typical pattern

