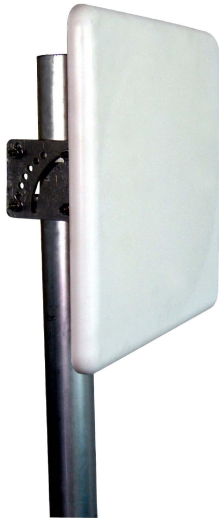




Directional Flat Panel Antenna



Tip: Pictures are for reference only.
Please refer to physical objects.

- Model: FTD-04PB09DP65
- Name: Directional Flat Panel Antenna
- Freq.Range: 450 to 470 MHz
- Communications system: VHF/UHF,
Wireless data transmission station,
Wireless trunking communication system,
Cellular Communication System,
Wireless access communication system
- Application scenario: Point to point
Point to multipoint,
Wireless data and image transmission,
Outdoor signal directional coverage

Electrical Specifications

Freq.Range-MHz	450 to 470
Bandwidth-MHz	20
Polarization	±45°
Gain-dBi	9
Half-power beam width-°	H:65 E:60
Cross-pol-isolation-dB	≥20
F/B-dB	≥ 18
Impedance-Ω	50
VSWR	≤ 2.0
Max.Power-W	100
Lightning Protection	DC Grounded

Mechanical Specifications

Connector	2×N female
Connector Position	Back
Dimension-MM	About 380×380×33
Weight-KG	About 1.8
Radome material	ABS
Radome color	White
Mechanical tilt-°	0 to 60
Operational Temperature-°C	-40 to 60
Storage Temperature-°C	-55 to 85
Relative Humidity-%	5 to 95
Rated Wind Velocity-M/S	60
Mounting way	Mast
Mast Diameter-MM	About Φ40 to 50



Installation Demonstrations

