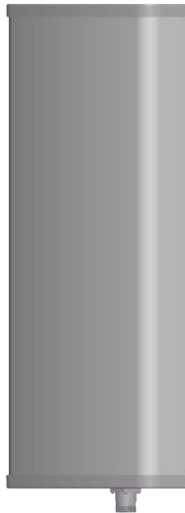




## Directional Sector Antenna



- Model: FTD-04SH11VP100
- Name: Directional Sector Antenna
- Freq.Range: 380 to 450 MHz
- Communications system: VHF/UHF, LoRa, Wireless data transmission station, Wireless trunking communication system, Wireless access communication system, Cellular Communication System
- Application scenario: Point to multipoint, Repeater antenna, Base station antenna, Wireless data and image transmission, Outdoor signal directional coverage

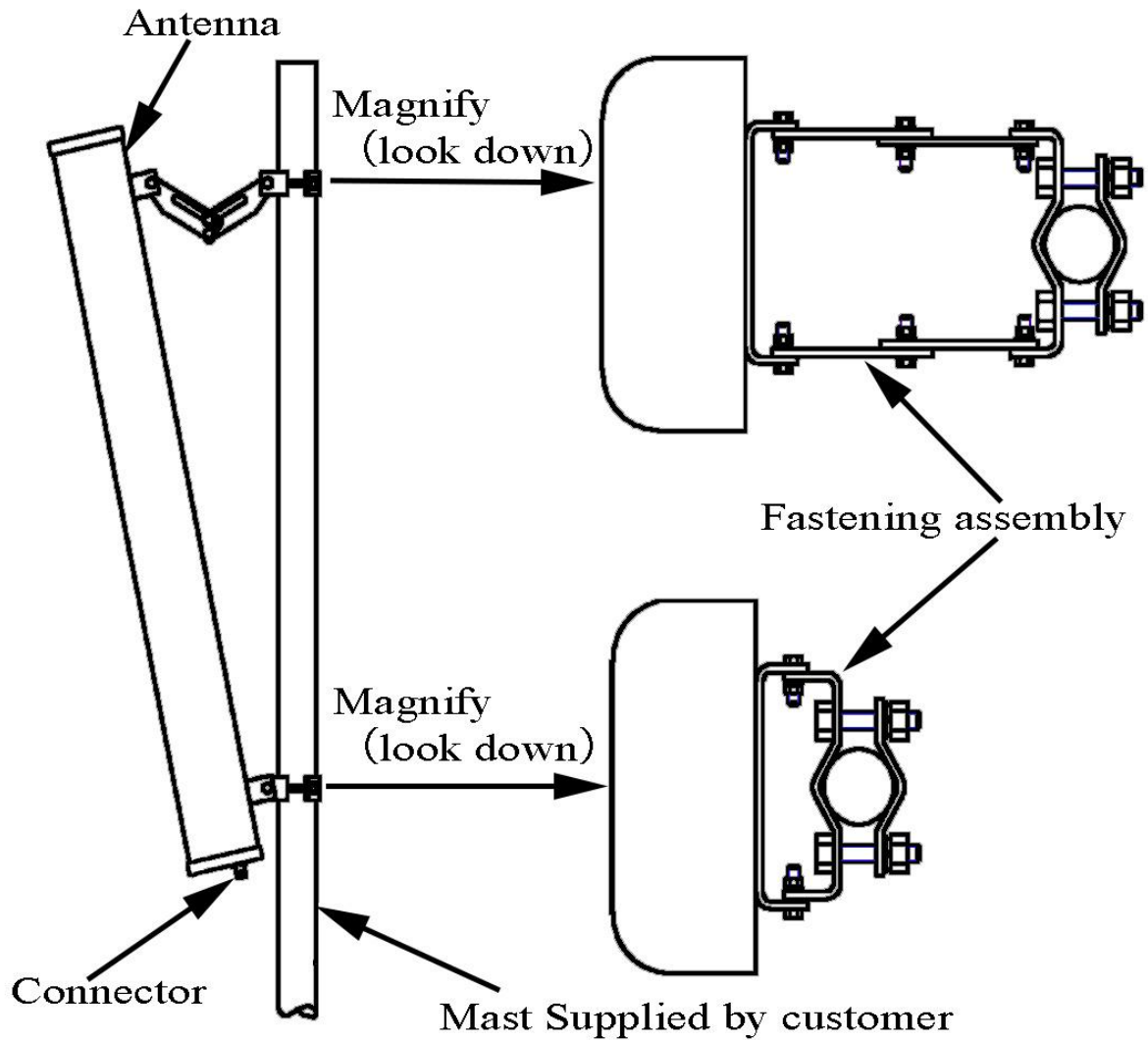
Tip: Pictures are for reference only.  
Please refer to physical objects.

Electrical Specifications	
Freq.Range-MHz	380 to 450
Bandwidth-MHz	70
Polarization	Vertical
Gain-dBi	10.5
Half-power beam width-°	H:100 E:35
F/B-dB	≥ 20
Impedance-Ω	50
VSWR	≤ 2.0
Max.Power-W	200
Lightning Protection	DC Grounded

Mechanical Specifications	
Connector	N female
Connector Position	Bottom
Dimension-MM	About 1050×300×146
Weight-KG	About 8
Radome material	UPVC
Radome color	Gray
Mechanical tilt-°	0 to 10
Operational Temperature-°C	-40 to 60
Storage Temperature-°C	-55 to 85
Relative Humidity-%	5 to 95
Rated Wind Velocity-M/S	60
Mounting way	Mast
Mast Diameter-MM	About Φ50 to 75



## Installation Demonstrations



## Typical pattern

