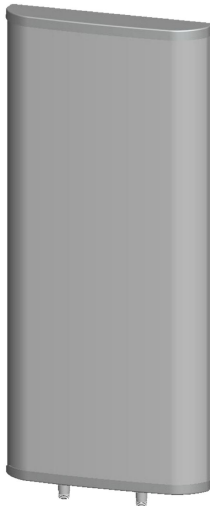




## Directional Sector Antenna



- Model: FTD-04SH12DP65
- Name: Directional Sector Antenna
- Freq.Range: 450 to 470 MHz
- Communications system: VHF/UHF, LoRa, Wireless data transmission station, Wireless trunking communication system, Wireless access communication system, Cellular Communication System
- Application scenario: Point to multipoint, Repeater antenna, Base station antenna, Wireless data and image transmission, Outdoor signal directional coverage

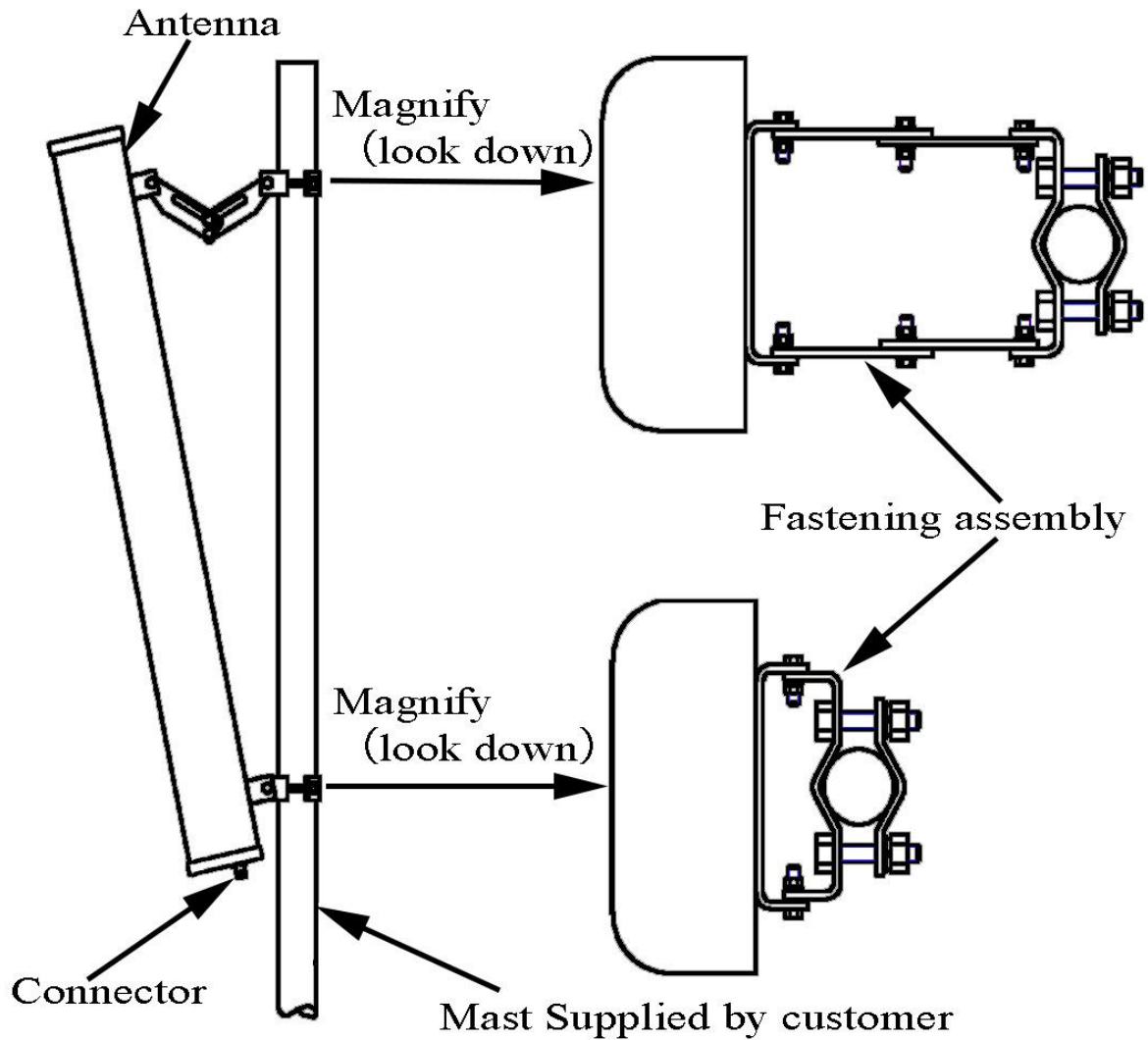
Tip: Pictures are for reference only.  
Please refer to physical objects.

Electrical Specifications	
Freq.Range-MHz	450 to 470
Bandwidth-MHz	20
Polarization	±45°
Gain-dBi	2×12
Half-power beam width-°	H:65 E:32
F/B-dB	≥ 25
Cross-pol-isolation-dB	≥ 28
Impedance-Ω	50
VSWR	≤ 1.5
Max.Power-W	300
Lightning Protection	DC Grounded

Mechanical Specifications	
Connector	2×N female
Connector Position	Bottom
Dimension-MM	About 1050×515×100
Weight-KG	About 12.5
Radome material	UPVC
Radome color	Gray
Mechanical tilt-°	0 to 15
Operational Temperature-°C	-40 to 60
Storage Temperature-°C	-55 to 85
Relative Humidity-%	5 to 95
Rated Wind Velocity-M/S	60
Mounting way	Mast
Mast Diameter-MM	About Φ50 to 115



## Installation Demonstrations



## Typical pattern

