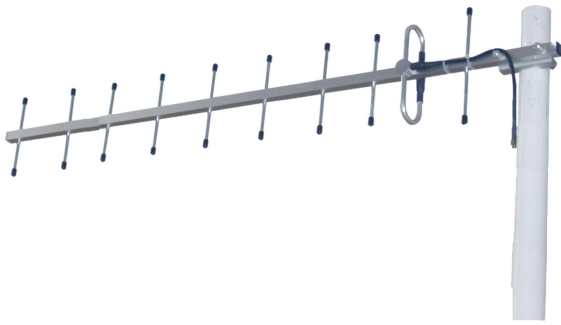




## Directional Yagi Antenna



- Model: FTD-0506BM12V10A
- Name: Directional Yagi Antenna
- Freq.Range: 580 to 690 MHz
- Communications system: DTTB, Wireless digital television system
- Application scenario: Point to point, Point to multipoint, Client antenna, Long-distance communication

Tip: Pictures are for reference only.  
Please refer to physical objects.

Electrical Specifications	
Freq.Range-MHz	580 to 690
Bandwidth-MHz	40
Unit	10
Polarization	Vertical or Horizontal
Gain-dBi	11.6
Vertical Beamwidth-°	36
Horizontal Beamwidth-°	40
F/B-dB	≥ 18
Impedance-Ω	50
VSWR	≤ 1.5
Max.Power-W	100

Mechanical Specifications	
Connector	N female or customized
Connector Position	Cable outgoing
Length-CM	About 100
Weight-KG	About 0.42
Radome material	Aluminium alloy
Operational Temperature-°C	-40 to 60
Storage Temperature-°C	-55 to 85
Relative Humidity-%	5 to 95
Rated Wind Velocity-M/S	60
Mounting way	Mast
Mast Diameter-MM	About Φ40 to 50



## Installation Demonstrations

