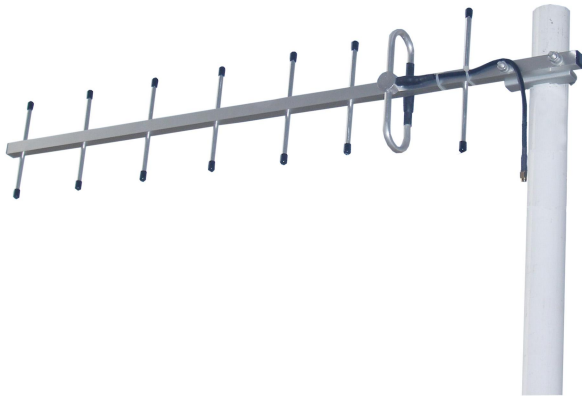




Directional Yagi Antenna



- Model: FTD-0607BM11V08A
- Name: Directional Yagi Antenna
- Freq.Range: 680 to 800 MHz
- Communications system: DTTB, Wireless digital television system
- Application scenario: Point to point, Point to multipoint, Client antenna, Long-distance communication

Tip: Pictures are for reference only.
Please refer to physical objects.

Electrical Specifications	
Freq.Range-MHz	680 to 800
Bandwidth-MHz	60
Unit	8
Polarization	Vertical or Horizontal
Gain-dBi	11.2
Vertical Beamwidth-°	40
Horizontal Beamwidth-°	44
F/B-dB	≥ 16
Impedance-Ω	50
VSWR	≤ 1.5
Max.Power-W	100

Mechanical Specifications	
Connector	N female or customized
Connector Position	Cable outgoing
Length-CM	About 80
Weight-KG	About 0.38
Radome material	Aluminium alloy
Operational Temperature-°C	-40 to 60
Storage Temperature-°C	-55 to 85
Relative Humidity-%	5 to 95
Rated Wind Velocity-M/S	60
Mounting way	Mast
Mast Diameter-MM	About Φ40 to 50



Installation Demonstrations

