



## Directional Flat Panel Antenna



- Model: FTD-07PB09VH70
- Name: Directional Flat Panel Antenna
- Freq.Range: 700 to 800 MHz
- Communications system: DTTB,  
Wireless digital television system
- Application scenario: Point to point,  
Point to multipoint,  
Outdoor signal directional coverage

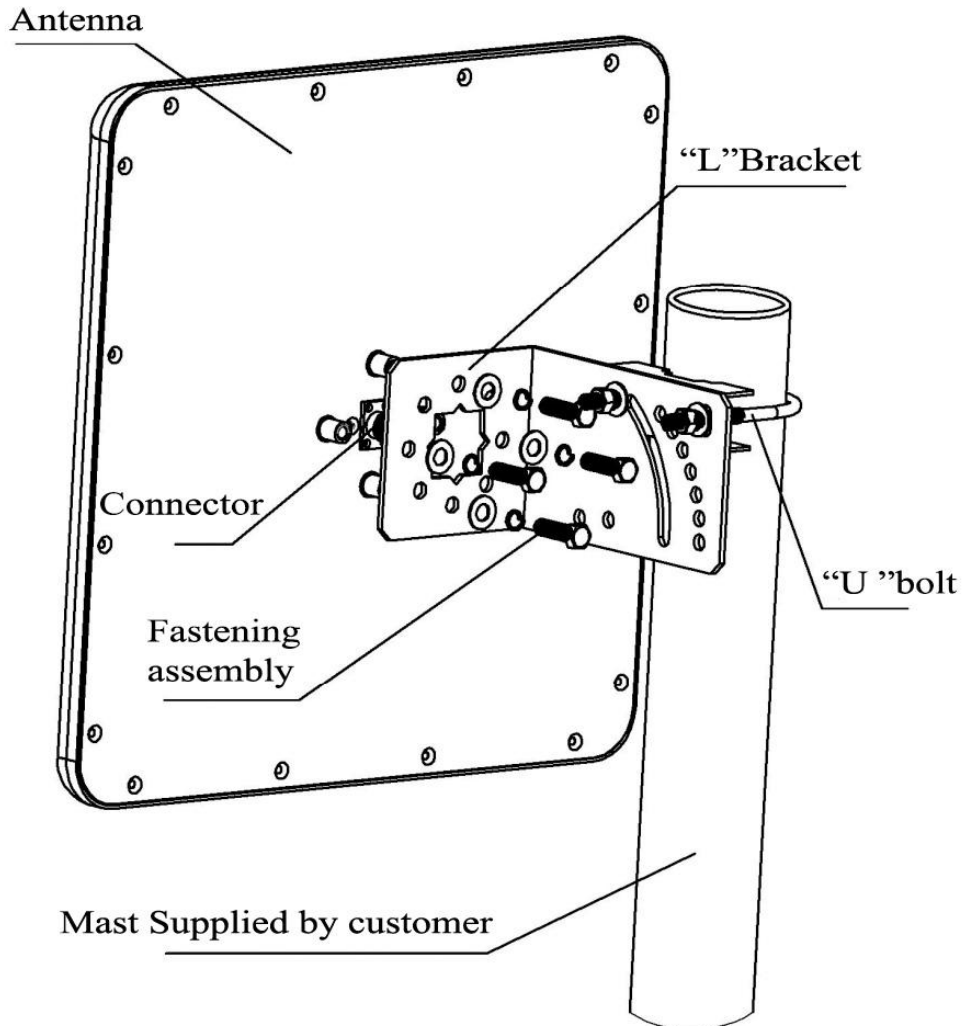
Tip: Pictures are for reference only.  
Please refer to physical objects.

Electrical Specifications	
Freq.Range-MHz	700 to 800
Bandwidth-MHz	100
Polarization	V/H
Gain-dBi	8.5
Half-power beam width-°	H:68 E:60
Cross-pol-isolation-dB	≥20
F/B-dB	≥ 15
Impedance-Ω	50
VSWR	≤ 1.8
Max.Power-W	100
Lightning Protection	DC Grounded

Mechanical Specifications	
Connector	2×N female
Connector Position	Back
Dimension-MM	About 280×280×45
Weight-KG	About 1
Radome material	ABS
Radome color	White
Mechanical tilt-°	0 to 30
Operational Temperature-°C	-40 to 60
Storage Temperature-°C	-55 to 85
Relative Humidity-%	5 to 95
Rated Wind Velocity-M/S	60
Mounting way	Mast
Mast Diameter-MM	About Φ35 to 50



## Installation Demonstrations



## Connector and Typical pattern

