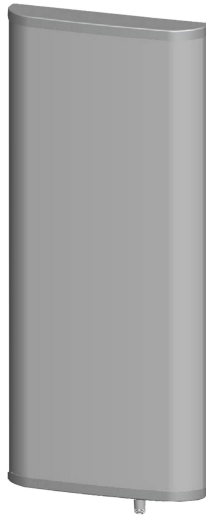




Directional Sector Antenna



- Model: FTD-0506SH12VP65B
- Name: Directional Sector Antenna
- Freq.Range: 598 to 638 MHz
- Communications system: DTTB,
Wireless digital television system
- Application scenario: Point to multipoint,
Repeater antenna, Base station antenna,
Outdoor signal directional coverage,
Mobile Video, Remote communication

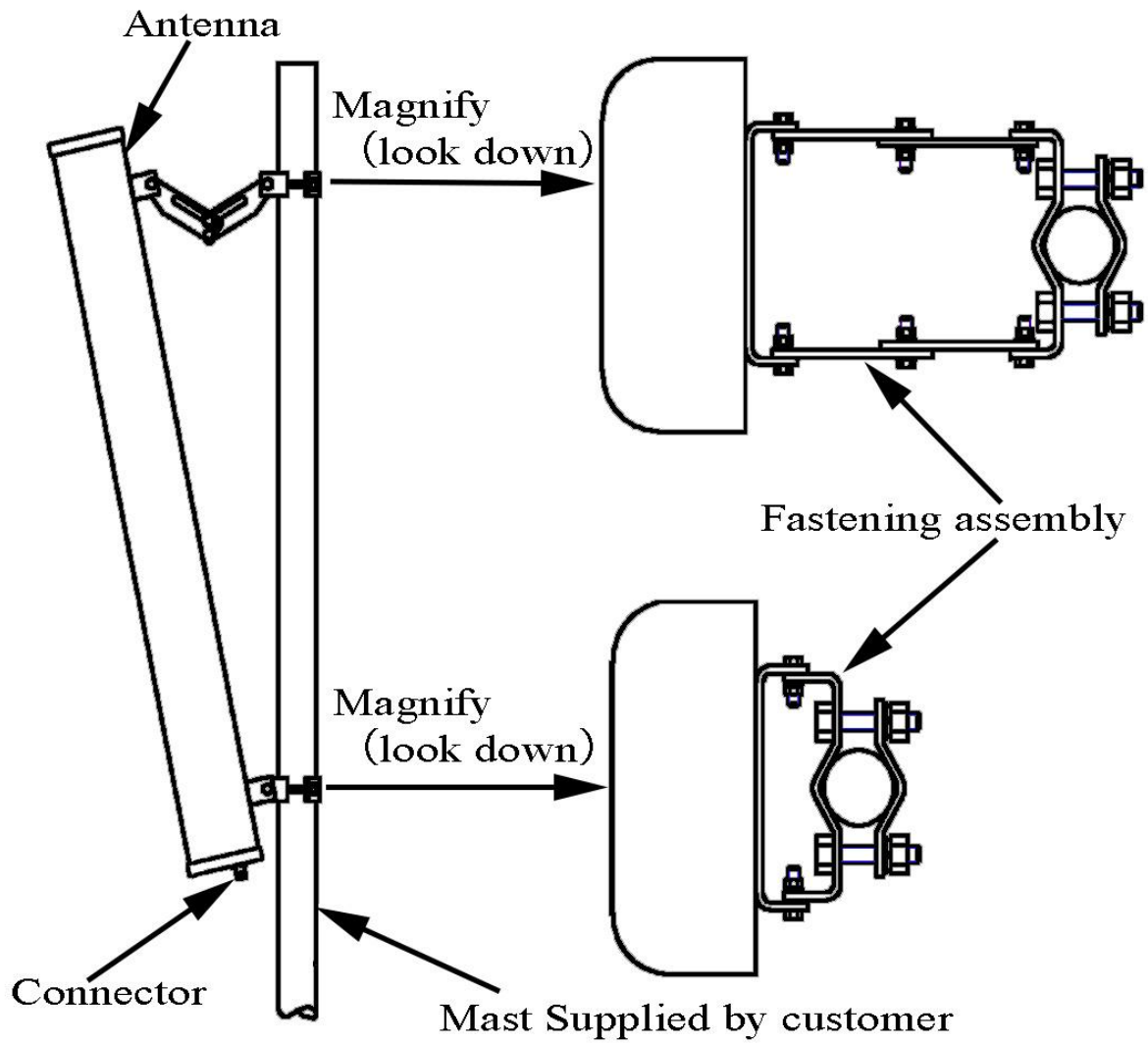
Tip: Pictures are for reference only.
Please refer to physical objects.

| Electrical Specifications | |
|----------------------------|-------------|
| Freq.Range-MHz | 598 to 638 |
| Bandwidth-MHz | 40 |
| Polarization | Vertical |
| Gain-dBi | 12 |
| Beam Electrical Downtilt-° | 0 |
| Half-power beam width-° | H:65 E:30 |
| F/B-dB | ≥ 25 |
| Impedance-Ω | 50 |
| VSWR | ≤ 1.5 |
| Max.Power-W | 200 |
| Lightning Protection | DC Grounded |

| Mechanical Specifications | |
|----------------------------|------------------|
| Connector | N female |
| Connector Position | Bottom |
| Dimension-MM | About 800×320×80 |
| Weight-KG | About 8 |
| Radome material | UPVC |
| Radome color | Gray |
| Mechanical tilt-° | 0 to 10 |
| Operational Temperature-°C | -40 to 60 |
| Storage Temperature-°C | -55 to 85 |
| Relative Humidity-% | 5 to 95 |
| Rated Wind Velocity-M/S | 60 |
| Mounting way | Mast |
| Mast Diameter-MM | About Φ50 to 75 |



Installation Demonstrations



Typical pattern

