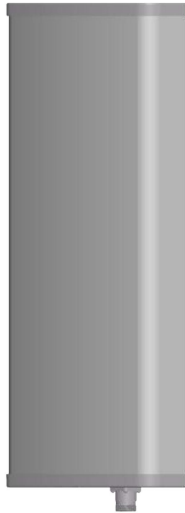




## Directional Sector Antenna



- Model: FTD-0506SH16HP90A
- Name: Directional Sector Antenna
- Freq.Range: 566 to 666 MHz
- Communications system: DTTB,  
Wireless digital television system
- Application scenario: Point to multipoint,  
Repeater antenna, Base station antenna,  
Outdoor signal directional coverage,  
Mobile Video, Remote communication

Tip: Pictures are for reference only.  
Please refer to physical objects.

| Electrical Specifications  |             |
|----------------------------|-------------|
| Freq.Range-MHz             | 566 to 666  |
| Bandwidth-MHz              | 100         |
| Polarization               | Horizontal  |
| Gain-dBi                   | 15.5        |
| Beam Electrical Downtilt-° | 0           |
| Half-power beam width-°    | H:90 E:10   |
| F/B-dB                     | ≥ 18        |
| Impedance-Ω                | 50          |
| VSWR                       | ≤ 1.5       |
| Max.Power-W                | 200         |
| Lightning Protection       | DC Grounded |

| Mechanical Specifications  |                    |
|----------------------------|--------------------|
| Connector                  | N female           |
| Connector Position         | Bottom             |
| Dimension-MM               | About 2470×300×146 |
| Weight-KG                  | About 20           |
| Radome material            | UPVC               |
| Radome color               | Gray               |
| Mechanical tilt-°          | 0 to 10            |
| Operational Temperature-°C | -40 to 60          |
| Storage Temperature-°C     | -55 to 85          |
| Relative Humidity-%        | 5 to 95            |
| Rated Wind Velocity-M/S    | 60                 |
| Mounting way               | Mast               |
| Mast Diameter-MM           | About Φ50 to 75    |



## Installation Demonstrations

