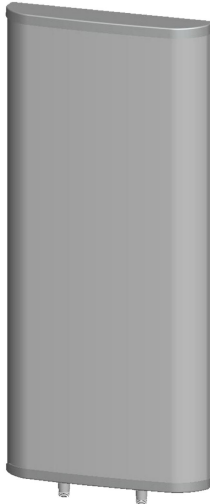




## Directional Sector Antenna



- Model: FTD-0506SH09DP65B
- Name: Directional Sector Antenna
- Freq.Range: 566 to 626 MHz
- Communications system: DTTB,  
Wireless digital television system
- Application scenario: Point to multipoint,  
Repeater antenna, Base station antenna,  
Outdoor signal directional coverage,  
Mobile Video, Remote communication

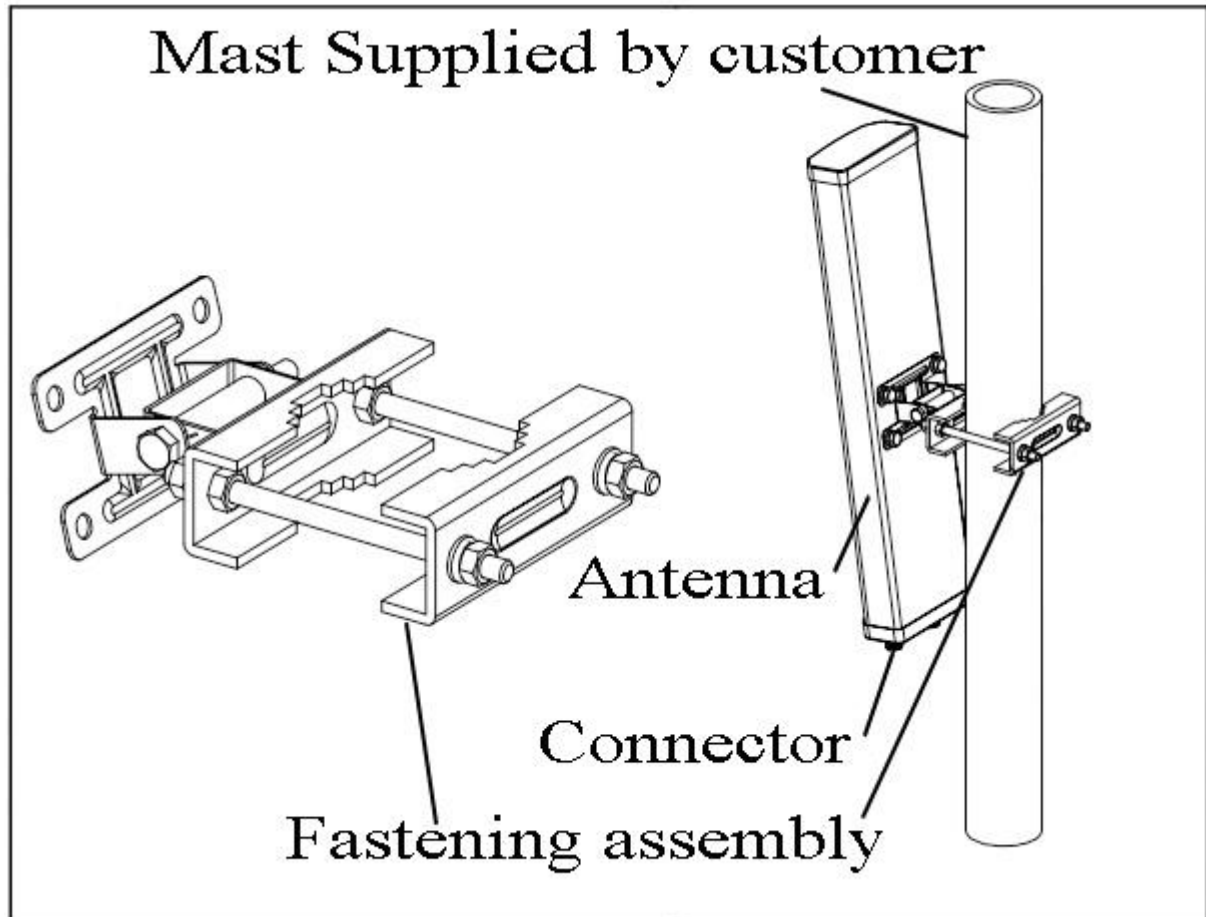
Tip: Pictures are for reference only.  
Please refer to physical objects.

| Electrical Specifications          |                |
|------------------------------------|----------------|
| Freq.Range-MHz                     | 566 to 626     |
| Bandwidth-MHz                      | 60             |
| Polarization                       | $\pm 45^\circ$ |
| Gain-dBi                           | 9              |
| Beam Electrical Downtilt- $^\circ$ | 0              |
| Half-power beam width- $^\circ$    | H:65 E:55      |
| F/B-dB                             | $\geq 20$      |
| Cross-pol-isolation-dB             | $\geq 25$      |
| Impedance- $\Omega$                | 50             |
| VSWR                               | $\leq 1.5$     |
| Max.Power-W                        | 200            |
| Lightning Protection               | DC Grounded    |

| Mechanical Specifications           |                                    |
|-------------------------------------|------------------------------------|
| Connector                           | 2 $\times$ N female                |
| Connector Position                  | Bottom                             |
| Dimension-MM                        | About 400 $\times$ 320 $\times$ 80 |
| Weight-KG                           | About 4                            |
| Radome material                     | UPVC                               |
| Radome color                        | Gray                               |
| Mechanical tilt- $^\circ$           | 0 to 15                            |
| Operational Temperature- $^\circ$ C | -40 to 60                          |
| Storage Temperature- $^\circ$ C     | -55 to 85                          |
| Relative Humidity-%                 | 5 to 95                            |
| Rated Wind Velocity-M/S             | 60                                 |
| Mounting way                        | Mast                               |
| Mast Diameter-MM                    | About $\Phi$ 50 to 75              |



## Installation Demonstrations



## Antenna Connector

