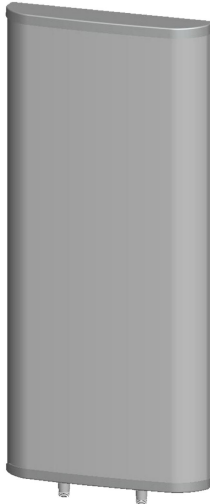




Directional Sector Antenna



- Model: FTD-0506SH15DP65B
- Name: Directional Sector Antenna
- Freq.Range: 566 to 626 MHz
- Communications system: DTTB,
Wireless digital television system
- Application scenario: Point to multipoint,
Repeater antenna, Base station antenna,
Outdoor signal directional coverage,
Mobile Video, Remote communication

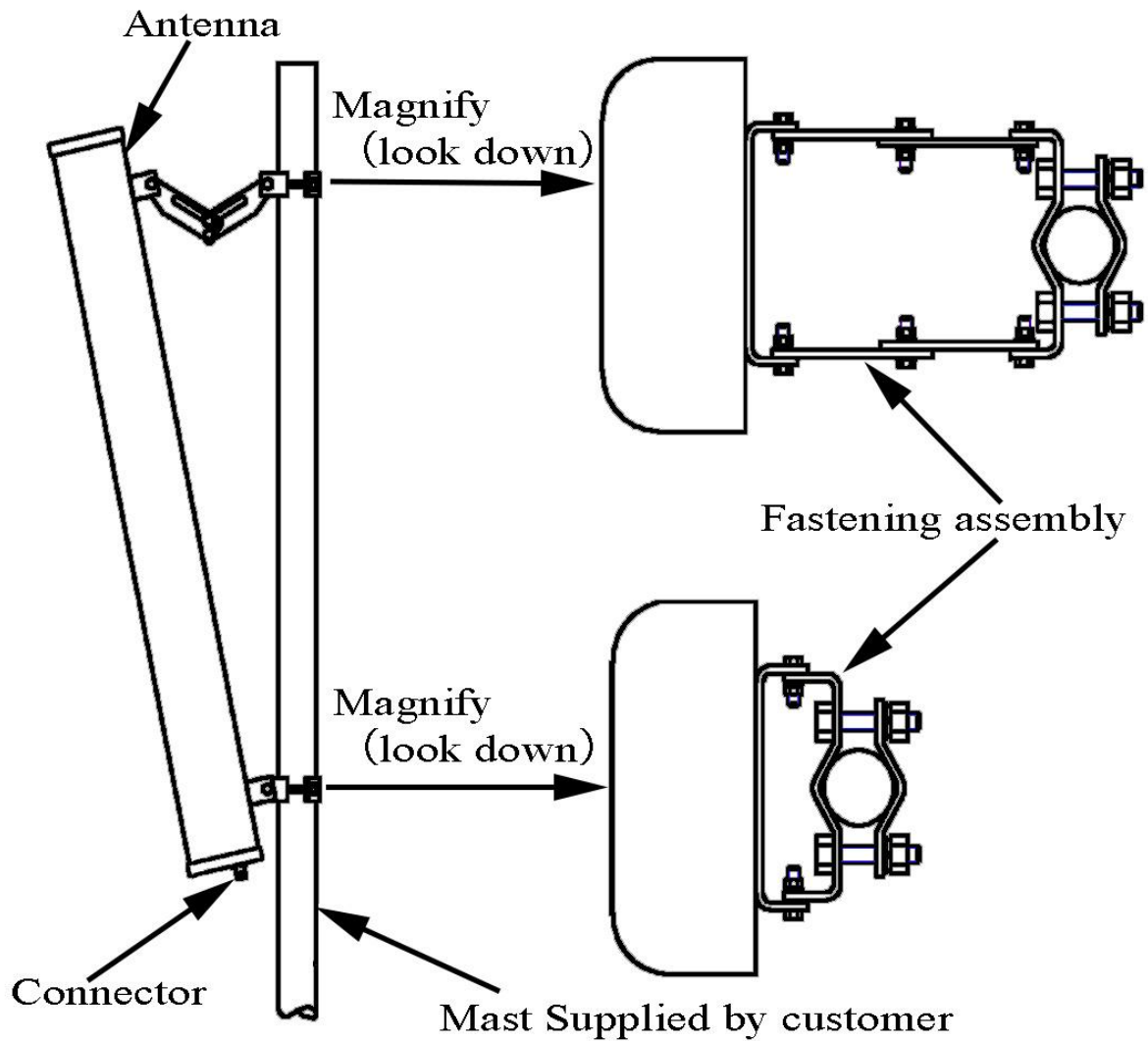
Tip: Pictures are for reference only.
Please refer to physical objects.

Electrical Specifications	
Freq.Range-MHz	566 to 626
Bandwidth-MHz	60
Polarization	±45°
Gain-dBi	14.5
Beam Electrical Downtilt-°	0
Half-power beam width-°	H:65 E:15
F/B-dB	≥ 20
Cross-pol-isolation-dB	≥ 25
Impedance-Ω	50
VSWR	≤ 1.5
Max.Power-W	200
Lightning Protection	DC Grounded

Mechanical Specifications	
Connector	2×N female
Connector Position	Bottom
Dimension-MM	About 1650×320×80
Weight-KG	About 13
Radome material	UPVC
Radome color	Gray
Mechanical tilt-°	0 to 10
Operational Temperature-°C	-40 to 60
Storage Temperature-°C	-55 to 85
Relative Humidity-%	5 to 95
Rated Wind Velocity-M/S	60
Mounting way	Mast
Mast Diameter-MM	About Φ50 to 75



Installation Demonstrations



Typical pattern and Connector

