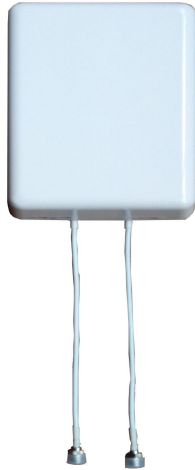




Directional Wall Mounted Antenna



Tip: Pictures are for reference only.
Please refer to physical objects.

- Model: FTD-0738BG0507VH90A
- Name: Directional Wall Mounted Antenna
- Freq.Range: 698 to 808 / 806 to 960 / 1710 to 2700 / 3300 to 3800 MHz
- Communications system: WLAN/WIFI/ISM, GSM/CDMA/EGSM/DCS1800/MMDS/5G, TD-SCDMA/WCDMA/TDD&FDD-LTE, Wireless access communication system, Wireless trunking communication system, Indoor distributed communication system
- Application scenario:
Indoor signal directional coverage,
Wireless data and image transmission

Electrical Specifications

Freq.Range-MHz	698 to 806	806 to 960	1710 to 2700	3300 to 3800
Bandwidth-MHz	108	154	990	500
Polarization	Vertical and Horizontal			
Gain-dBi	5		7	
Half-power beam width-°	H:90±10 / E:80		H:75±10 / E:45	
F/B-dB	≥ 15		≥ 16	
Cross-pol-isolation-dB	≥ 20			
Third-order passive intermodulation-dBc	≤-150 (@2×33dBm)			
VSWR	≤ 1.5		≤ 1.8	
Impedance-Ω	50			
Max.Power-W	50			

Mechanical Specifications

Connector	2×N female or Customized
Connector Position	Cable outgoing
Cable Length-CM	30CM or Customized
Dimension-M	About 206×176×43
Weight-KG	About 0.5
Radome material	ABS
Radome color	White
Operational Temperature-°C	-40 to 60
Storage Temperature-°C	-55 to 85
Relative Humidity-%	5 to 95
Mounting way	Wall mounting



Installation Demonstrations

