



Directional Sector Antenna



Tip: Pictures are for reference only.
Please refer to physical objects.

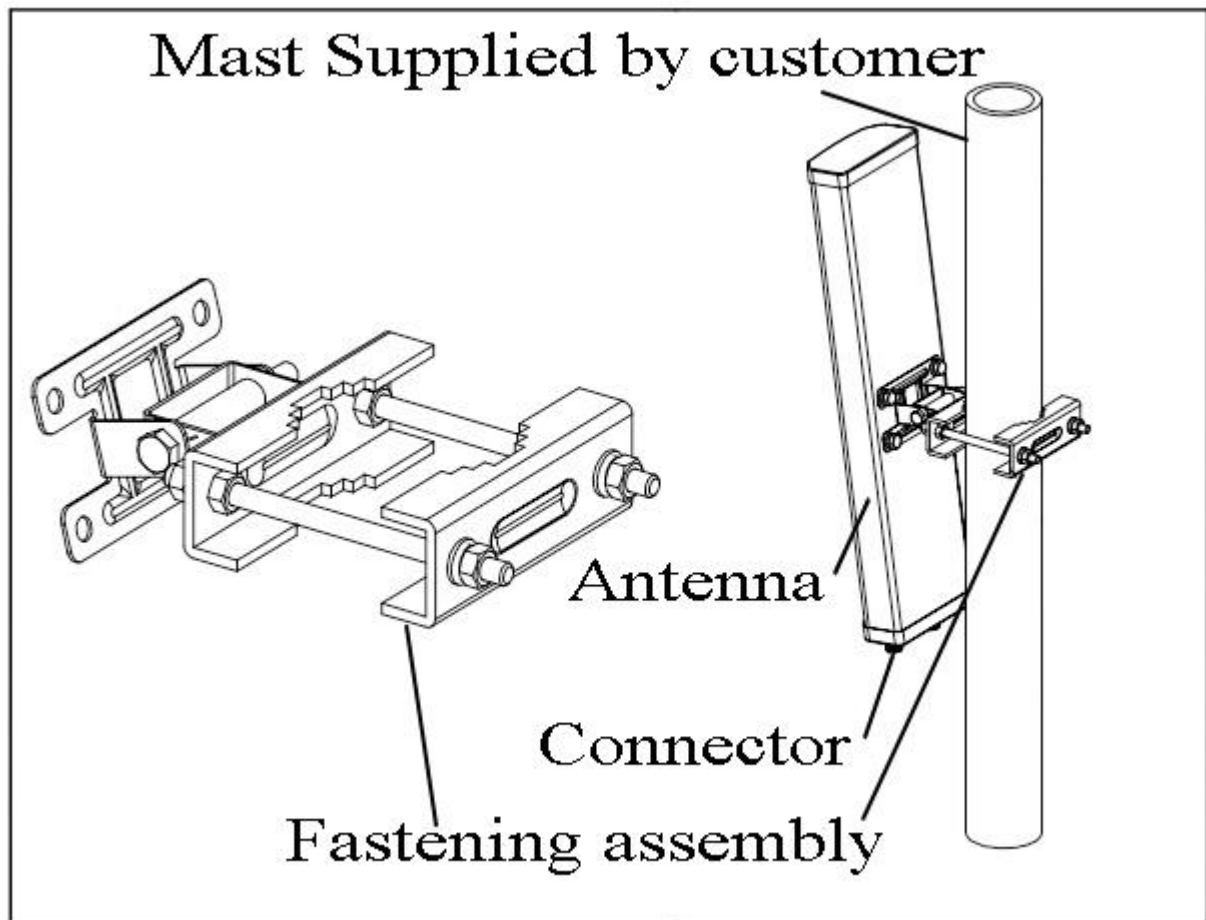
- Model: FTD-0738SH0707DP60A
- Name: Directional Sector Antenna
- Freq.Range: 698 to 960 / 1710 to 2700 / 3300 to 3800 MHz
- Communications system: WLAN/WIFI/ISM, GSM/CDMA/EGSM/DCS1800/MMDS/5G, TD-SCDMA/WCDMA/TDD&FDD-LTE, Wireless trunking communication system, Wireless access communication system, Wireless cellular Communication System
- Application scenario: Point to multipoint, Repeater antenna, Base station antenna, Outdoor signal directional coverage

Electrical Specifications				
Connector	Port 1 & Port 2			Port 3 & Port 4
Freq.Range-MHz	698 to 960	1710 to 2700	3300 to 3800	3300 to 3800
Bandwidth-MHz	262	990	500	500
Polarization	±45°			
Gain-dBi	2×6.6	2×6.5	2×6.5	2×6.5
Beam Electrical Downtilt-°	0			
Half-power beam width-°	H:60±10		E:60 ±10	
Cross-pol. Discrimination_XPD-dB	≥17 (±60°≥8)			
Third-order passive intermodulation-dBc	≤-150dBc (2×43dBm)			
Cross-pol-isolation-dB	≥23			
F/B-dB	≥ 23			
Impedance-Ω	50			
VSWR	≤ 1.5			
Max.Power-W	200			
Lightning Protection	DC Grounded			

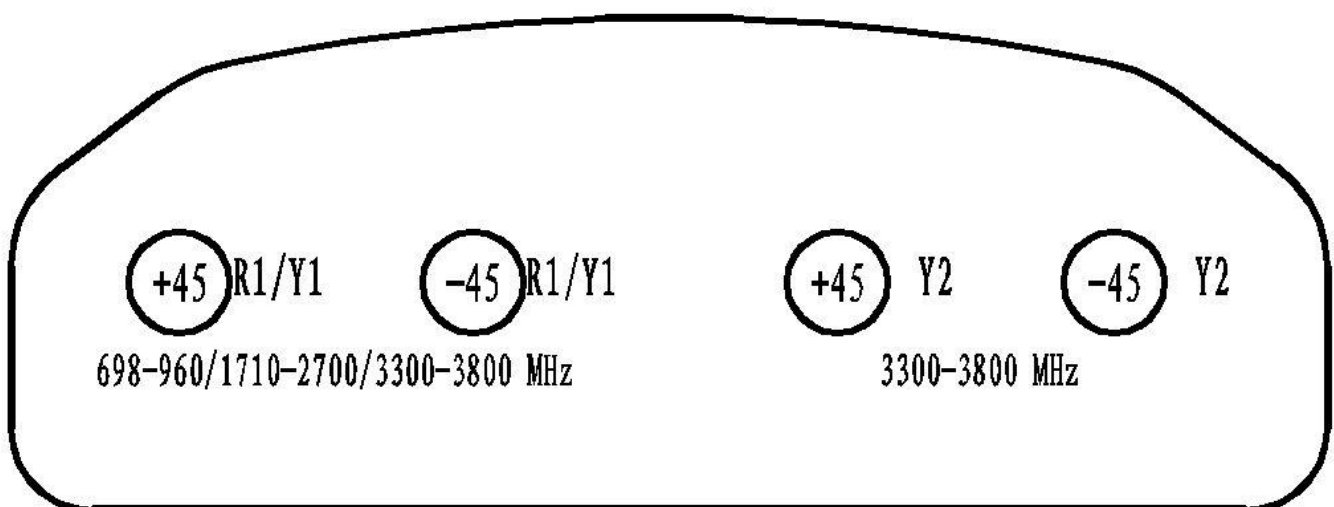
Mechanical Specifications	
Connector	4×7/16 female
Connector Position	Bottom
Dimension-MM	About 465×385×138
Weight-KG	About 4.5
Radome material and color	Gray UPVC
Mechanical tilt-°	0 to 15
Operational and Storage Temperature-°C	-40 to 60 and -55 to 85
Relative Humidity-%	5 to 95
Rated Wind Velocity-M/S	60
Mounting way	Mast
Mast Diameter-MM	About Φ35 to 75



Installation Demonstrations



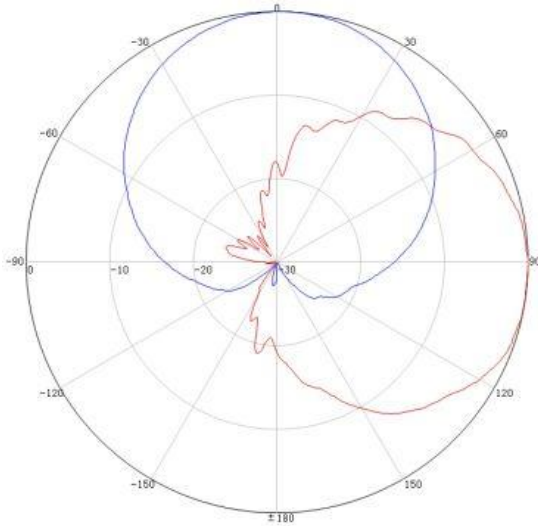
Connector



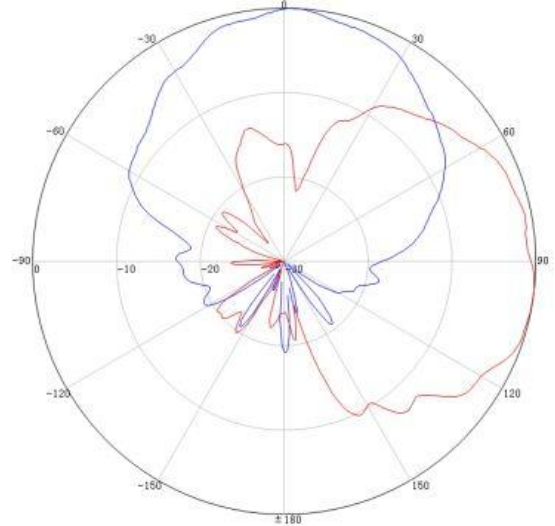


Typical pattern

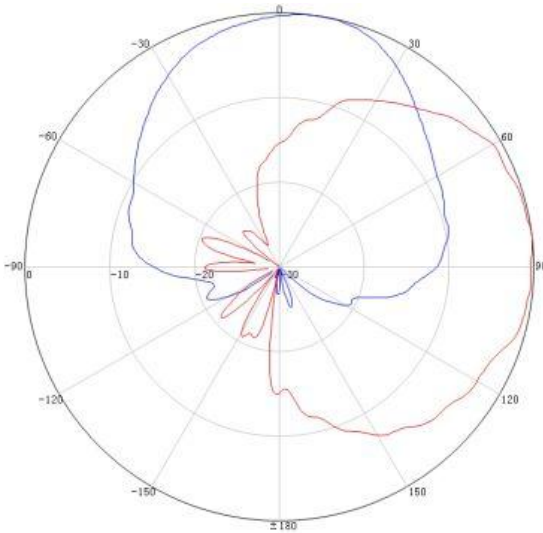
698~960MHz: $\pm 45^\circ$ Pol.



1710~2700MHz: $\pm 45^\circ$ Pol.



3300~3800MHz: $\pm 45^\circ$ Pol.



3300~3800MHz: $\pm 45^\circ$ Pol.

