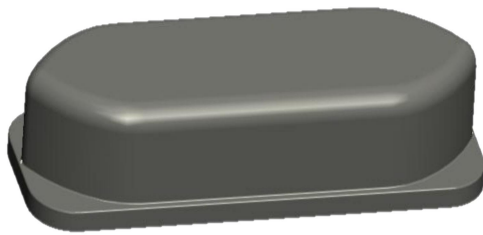




Omnidirectional Mobile Antenna



- Model: FTQ-0750CT0608A
- Name: Omnidirectional Mobile Antenna
- Freq.Range: 703 to 748 / 758 to 803 / 824 to 849 / 869 to 894 / 880 to 915 / 925 to 960 / 2010 to 2025 / 1880 to 1920 / 2300 to 2400 / 2570 to 2720 / 2496 to 2690 / 1710 to 1785 / 1805 to 1880 / 1920 to 1980 / 2110 to 2170 / 2515 to 2675 / 3400 to 3600 / 4800 to 5000
- Application scenario: Client antenna, Vehicle-mounted mobile communication, Wireless data and image transmission

Tip: Pictures are for reference only.
Please refer to physical objects.

Electrical Specifications					
Connector	Port 1	Port 2	Port 3	Port 4	Port 5
Freq.Range-MHz	703 to 748 758 to 803	2515 to 2675 3400 to 3600 4800 to 5000	824 to 849 869 to 894 880 to 915 925 to 960 2010 to 2025	1880 to 1920 2300 to 2400 2570 to 2620 2496 to 2690	1710 to 1785 1805 to 1880 1920 to 1980 2110 to 2170
Bandwidth-MHz	45/45	160/200/200	25/25/35/35/15	40/100/50/194	75/75/60/60
Gain-dBi	6.5±1	8.2±1	7.5±1	8±1	8±1
Horizontal Beamwidth-°	360				
Beam Electrical Uptilt-°	15 to 25				
VSWR	≤ 2.5	≤ 2.0	≤ 2.5	≤ 2.0	≤ 2.0
Impedance-Ω	50				
Polarization	Vertical				
Max.Power-W	50				

Mechanical Specifications	
Connector	SMA male or Customized
Connector Position	Cable outgoing
Antenna Dimension-MM	About 800×270×150
Antenna Weight-KG	About 15
Radome Material	ABS
Radome Color	Gray
Operational Temperature-°C	-40 to 60
Storage Temperature-°C	-55 to 85
Relative Humidity-%	5 to 95
Rated Wind Velocity-M/S	60
Remark	Magnetic adsorption