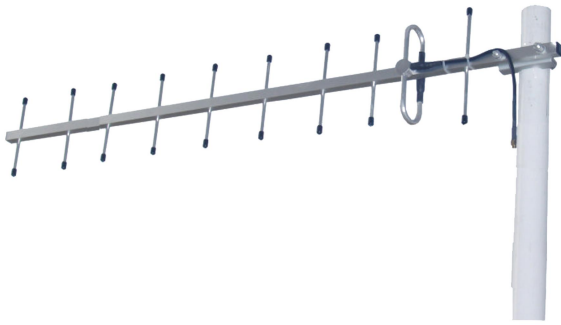




## Directional Yagi Antenna



- Model: FTD-0809BM12V10A
- Name: Directional Yagi Antenna
- Freq.Range: 806 to 960 MHz
- Communications system: CDMA/GSM,  
Wireless trunking communication system,  
Wireless data and image transmission
- Application scenario: Point to point,  
Point to multipoint, Client antenna,  
Long-distance communication

Tip: Pictures are for reference only.  
Please refer to physical objects.

### Electrical Specifications

Freq.Range-MHz	806 to 960
Bandwidth-MHz	154
Unit	10
Polarization	Vertical or Horizontal
Gain-dBi	11.6
Horizontal Beamwidth-°	40
Vertical Beamwidth-°	32
F/B-dB	≥ 16
Impedance-Ω	50
VSWR	≤ 1.5
Max.Power-W	100

### Mechanical Specifications

Connector	N female or customized
Connector Position	Cable outgoing
Length-M	About 1
Weight-KG	About 0.45
Radome material	Aluminium alloy
Operational Temperature-°C	-40 to 60
Storage Temperature-°C	-55 to 85
Relative Humidity-%	5 to 95
Rated Wind Velocity-M/S	60
Mounting way	Mast
Mast Diameter-MM	About Φ40 to 50



## Installation Demonstrations

