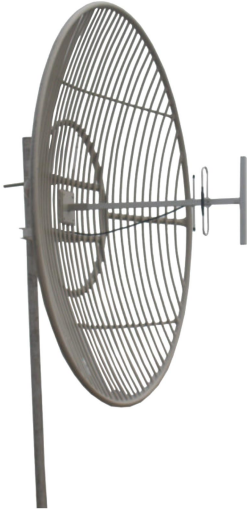




# Directional Parabolic Antenna



- Model: FTD-0809PW22V18
- Name: Directional Parabolic Antenna
- Freq.Range: 806 to 960MHz
- Communications system: CDAM/GSM,  
Wireless trunking communication system
- Application scenario: Repeater antenna,  
Point to point, Point to multipoint,  
Wireless bridging, Remote communication,  
Wireless data and image transmission

Tip: Pictures are for reference only.  
Please refer to physical objects.

Electrical Specifications	
Freq.Range-MHz	806 to 960
Bandwidth-MHz	70
Polarization	Vertical
Gain-dBi	21.5
Half-power beam width-°	H:11 E:11
F/B-dB	≥ 30
Impedance-Ω	50
VSWR	≤ 1.5
Max.Power-W	200
Lightning Protection	DC Grounded

Mechanical Specifications	
Connector	N female or Customized
Connector Position	Cable outgoing
Cable Length-CM	40CM or Customized
Diameter-M	About Φ1.8
Weight-KG	About 30
Radome material	Aluminium alloy
Radome color	Gray
Mechanical tilt-°	0 to 15
Operational Temperature-°C	-40 to 65
Storage Temperature-°C	-55 to 85
Relative Humidity-%	5 to 95
Rated Wind Velocity-M/S	60
Mounting way	Mast
Mast Diameter-MM	Φ50 to 60



## Installation Demonstrations

