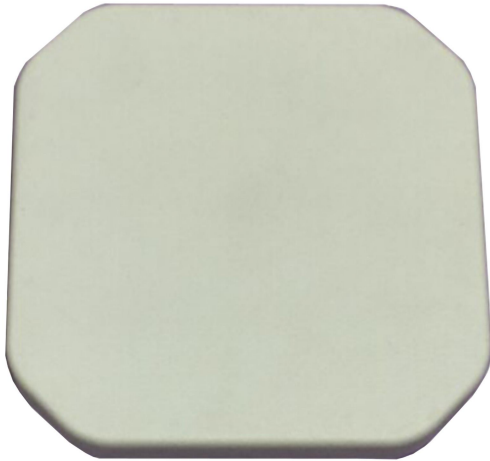




Directional Flat Panel Antenna



- Model: FTD-0809PB06R100
- Name: Directional Flat Panel Antenna
- Freq.Range: 865 to 928 MHz
- Communications system: CDMAG/GSM/RFID,
Wireless digital transmission,
Wireless communication,
Wireless trunking communication system
- Application scenario: Point to point,
Point to multipoint, Repeater antenna,
Wireless data and image transmission,
Outdoor signal directional coverage

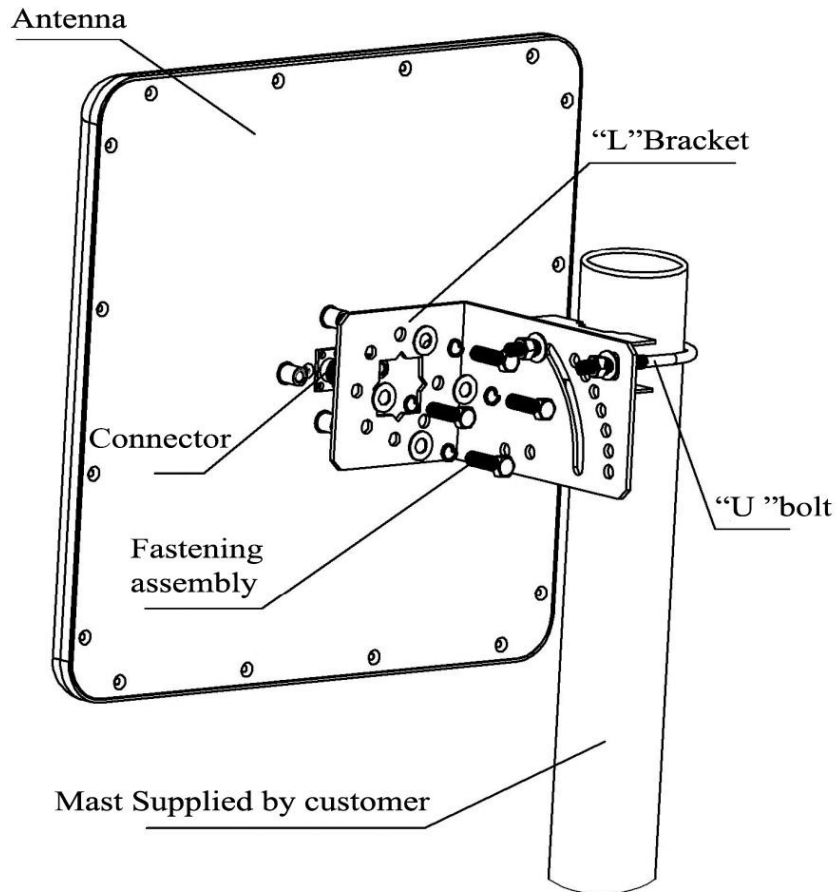
Tip: Pictures are for reference only.
Please refer to physical objects.

Electrical Specifications	
Freq.Range-MHz	865 to 928
Bandwidth-MHz	63
Polarization	Circular
Gain-dBi	5.5
Beam Electrical Downtilt-°	0
Half-power beam width-°	H:100 E:100
F/B-dB	≥ 10
Impedance-Ω	50
VSWR	≤ 1.3
Max.Power-W	20
Lightning Protection	DC Grounded

Mechanical Specifications	
Connector	N female
Connector Position	Back
Dimension-MM	About 132×132×18
Weight-KG	About 0.4
Radome material	ABS
Radome color	White
Mechanical tilt-°	0 to 60
Operational Temperature-°C	-40 to 60
Storage Temperature-°C	-55 to 85
Relative Humidity-%	5 to 95
Rated Wind Velocity-M/S	60
Mounting way	Mast
Mast Diameter-MM	Φ40 to 50



Installation Demonstrations



Typical pattern

