



## Directional Flat Panel Antenna



- Model: FTD-0809PB08V70
- Name: Directional Flat Panel Antenna
- Freq.Range: 824 to 960 MHz
- Communications system:CDMA/GSM/RFID,  
Wireless communication,  
Wireless digital transmission,  
Wireless trunking communication system
- Application scenario: Point to point,  
Point to multipoint, Repeater antenna,  
Wireless data and image transmission,  
Outdoor signal directional coverage

Tip: Pictures are for reference only.  
Please refer to physical objects.

### Electrical Specifications

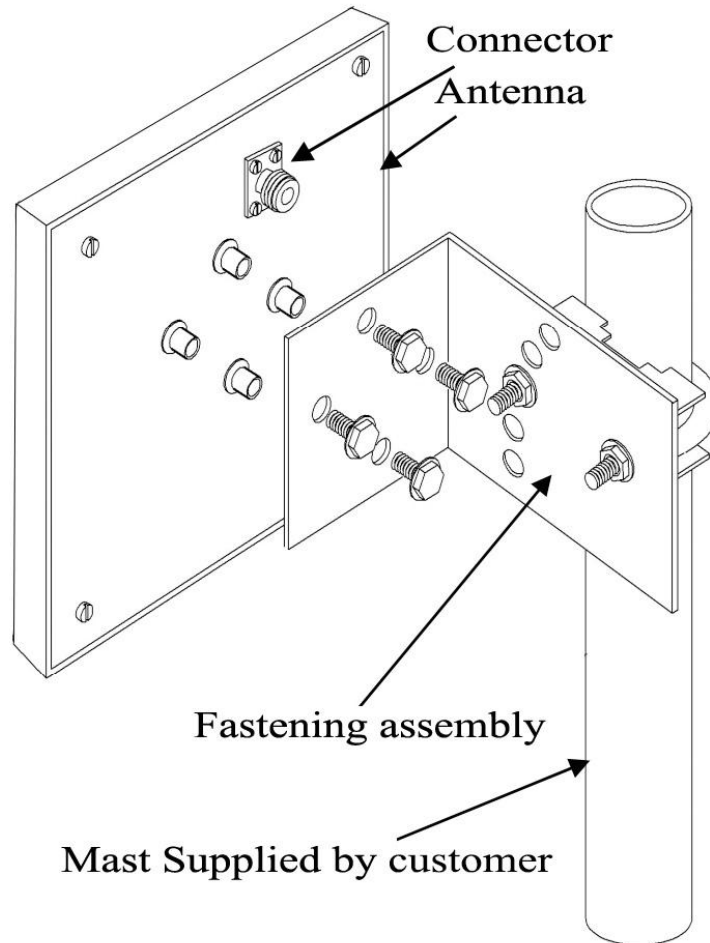
Freq.Range-MHz	824 to 960
Bandwidth-MHz	136
Polarization	Vertical
Gain-dBi	8
Beam Electrical Downtilt-°	0
Half-power beam width-°	H:70 E:60
F/B-dB	≥ 12
Impedance-Ω	50
VSWR	≤ 2.0@824 to 960/≤ 1.3@860 to 930
Max.Power-W	50
Lightning Protection	DC Grounded

### Mechanical Specifications

Connector	N female
Connector Position	Bottom
Dimension-MM	About 190×190×40
Weight-KG	About 1
Radome material	ABS
Radome color	White
Mechanical tilt-°	0 to 30
Operational Temperature-°C	-40 to 60
Storage Temperature-°C	-55 to 85
Relative Humidity-%	5 to 95
Rated Wind Velocity-M/S	60
Mounting way	Mast
Mast Diameter-MM	Φ35 to 50

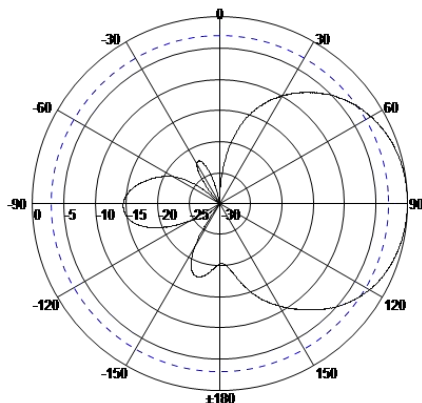


## Installation Demonstrations



## Typical pattern

H-Plane



E-Plane

