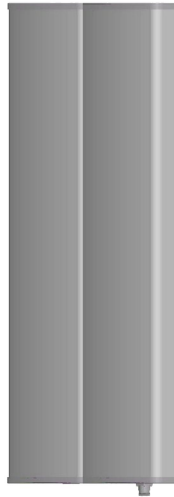




Directional Sector Antenna



- Model: FTD-0809SH2021VP30A
- Name: Directional Sector Antenna
- Freq.Range: 820 to 896 / 870 to 960 MHz
- Communications system: CDMA/GSM,
Wireless cellular Communication System,
Wireless trunking communication system
- Application scenario: Point to multipoint,
Repeater antenna, Base station antenna,
Wireless digital transmission,
Long-distance communication,
Wireless data and image transmission,
Outdoor signal directional coverage

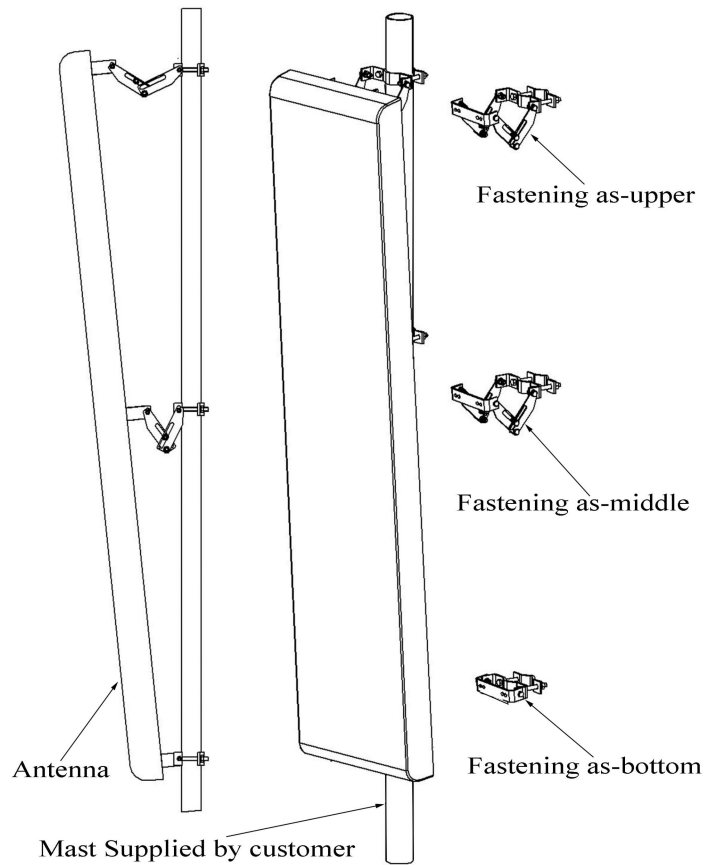
Tip: Pictures are for reference only.
Please refer to physical objects.

| Electrical Specifications | | |
|---|---------------------|------------|
| Freq.Range-MHz | 820 to 896 | 870 to 960 |
| Bandwidth-MHz | 76 | 90 |
| Polarization | Vertical | |
| Gain-dBi | 20 | 20.5 |
| Beam Electrical Downtilt-° | 0 | |
| Half-power beam width-° | H:30 E:7.5 | H:29.5 E:7 |
| First upper sidelobe suppression | N/A | |
| F/B-dB | ≥ 27 | |
| Impedance-Ω | 50 | |
| VSWR | ≤ 1.5 | |
| Third-order passive intermodulation-dBc | ≤ -150dBc (2×43dBm) | |
| Max.Power-W | 500 | |
| Lightning Protection | DC Grounded | |

| Mechanical Specifications | |
|----------------------------|--------------------|
| Connector | N female |
| Connector Position | Bottom |
| Dimension-MM | About 2530×570×125 |
| Weight-KG | About 42 |
| Radome material | UPVC |
| Radome color | Gray |
| Mechanical tilt-° | 0 to 10 |
| Operational Temperature-°C | -40 to 60 |
| Storage Temperature-°C | -55 to 85 |
| Relative Humidity-% | 5 to 95 |
| Rated Wind Velocity-M/S | 60 |
| Mounting way | Mast |
| Mast Diameter-MM | About Φ50 to 115 |

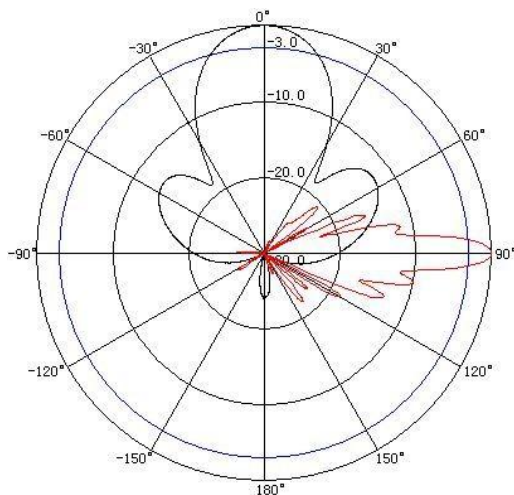


Installation Demonstrations



Typical pattern

820~896MHz



870~960MHz

