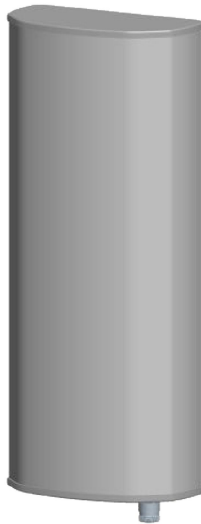




## Directional Sector Antenna



- Model: FTD-0809SH1111VP90A
- Name: Directional Sector Antenna
- Freq.Range: 820 to 896 / 870 to 960 MHz
- Communications system: CDMA/GSM,  
Wireless cellular Communication System,  
Wireless trunking communication system
- Application scenario: Point to multipoint,  
Repeater antenna, Base station antenna,  
Wireless digital transmission,  
Long-distance communication,  
Wireless data and image transmission,  
Outdoor signal directional coverage

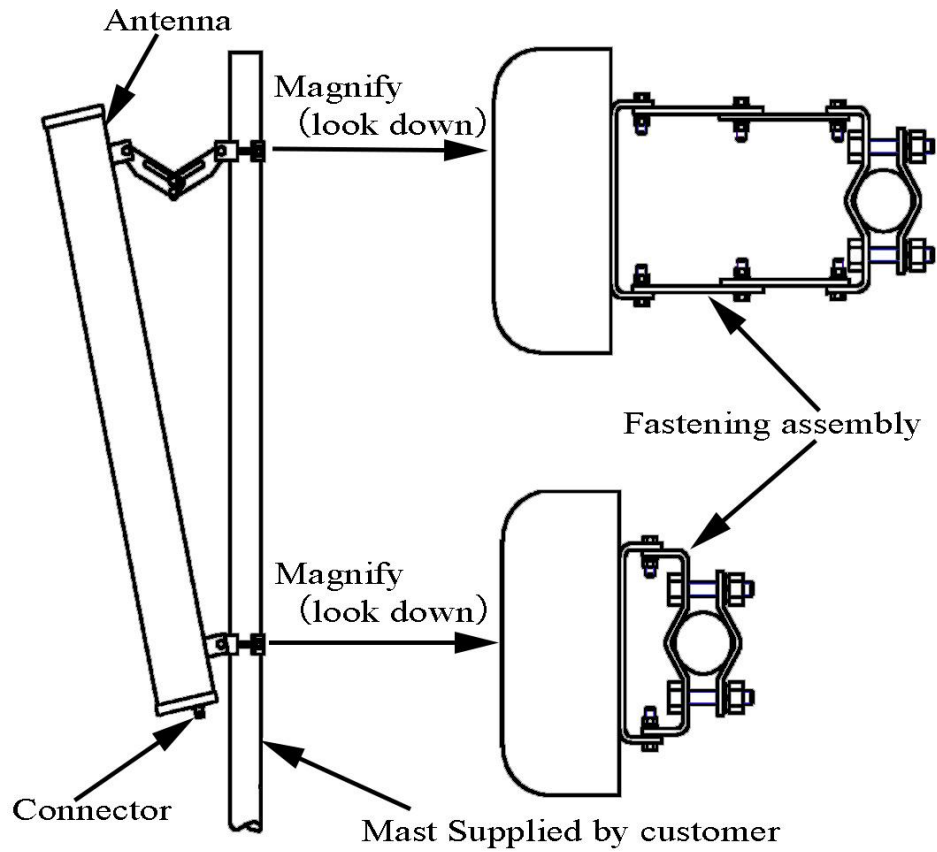
Tip: Pictures are for reference only.  
Please refer to physical objects.

Electrical Specifications			
Freq.Range-MHz	820 to 896		870 to 960
Bandwidth-MHz	76		90
Polarization	Vertical		
Gain-dBi	10.5		11
Beam Electrical Downtilt-°	0		
Half-power beam width-°	H:90	E:31	H:88 E:29
First upper sidelobe suppression	N/A		
F/B-dB	≥ 23		
Impedance-Ω	50		
VSWR	≤ 1.5		
Third-order passive intermodulation-dBc	≤ -150dBc (2×43dBm)		
Max.Power-W	500		
Lightning Protection	DC Grounded		

Mechanical Specifications	
Connector	N female
Connector Position	Bottom
Dimension-MM	About 650×270×137
Weight-KG	About 5.5
Radome material	UPVC
Radome color	Gray
Mechanical tilt-°	0 to 10
Operational Temperature-°C	-40 to 60
Storage Temperature-°C	-55 to 85
Relative Humidity-%	5 to 95
Rated Wind Velocity-M/S	60
Mounting way	Mast
Mast Diameter-MM	About Φ50 to 75

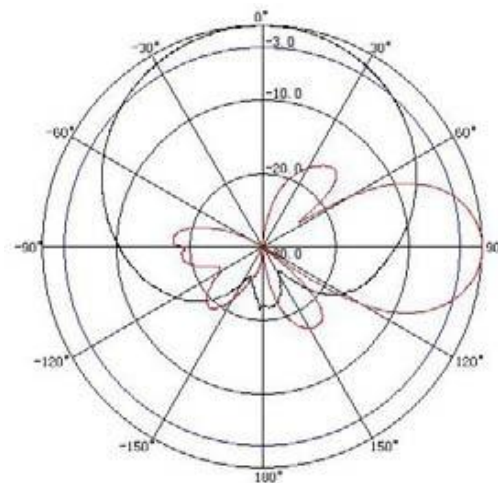


## Installation Demonstrations



## Typical pattern

820~896MHz



870~960MHz

