



Directional Sector Antenna



Tip: Pictures are for reference only.
Please refer to physical objects.

- Model: FTD-0809SH1414VP90A
- Name: Directional Sector Antenna
- Freq.Range: 820 to 896 / 870 to 960 MHz
- Communications system: CDMA/GSM,
Wireless cellular Communication System,
Wireless trunking communication system
- Application scenario: Point to multipoint,
Repeater antenna, Base station antenna,
Wireless digital transmission,
Long-distance communication,
Wireless data and image transmission,
Outdoor signal directional coverage

Electrical Specifications

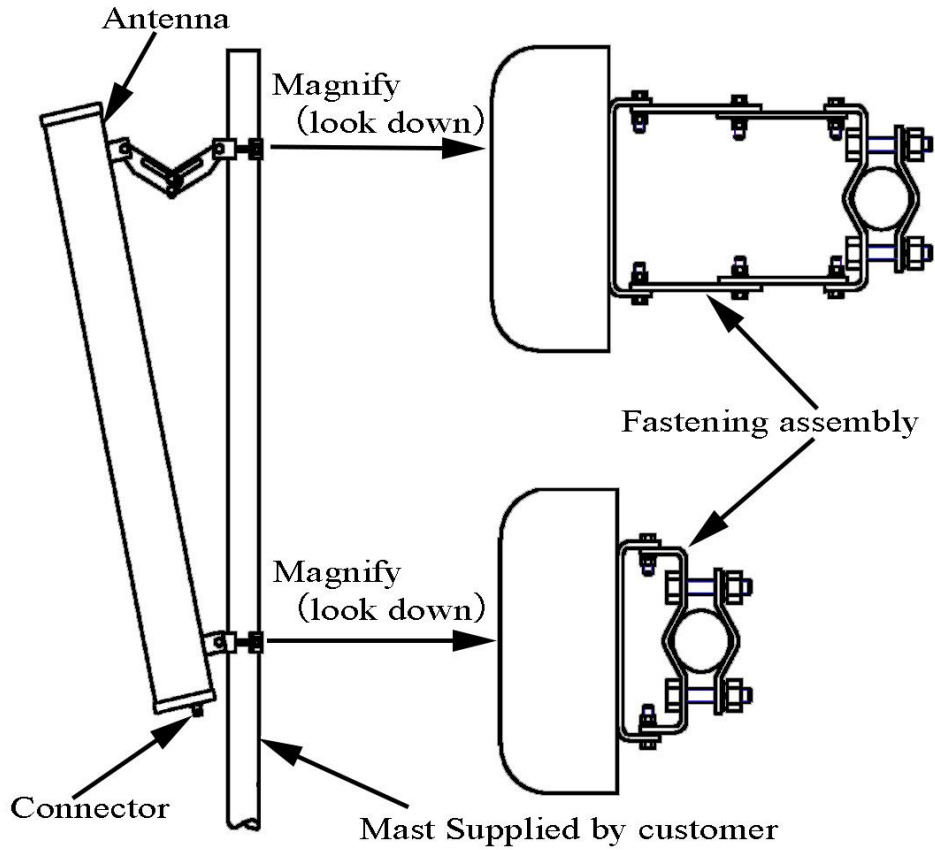
Freq.Range-MHz	820 to 896	870 to 960
Bandwidth-MHz	76	90
Polarization	Vertical	
Gain-dBi	13.5	14
Beam Electrical Downtilt-°	0	
Half-power beam width-°	H:90 E:14	H:88 E:13
First upper sidelobe suppression	N/A	
F/B-dB	≥ 23	
Impedance-Ω	50	
VSWR	≤ 1.5	
Third-order passive intermodulation-dBc	≤ -150dBc (2×43dBm)	
Max.Power-W	500	
Lightning Protection	DC Grounded	

Mechanical Specifications

Connector	N female
Connector Position	Bottom
Dimension-MM	About 1270×270×137
Weight-KG	About 9.5
Radome material	UPVC
Radome color	Gray
Mechanical tilt-°	0 to 15
Operational Temperature-°C	-40 to 60
Storage Temperature-°C	-55 to 85
Relative Humidity-%	5 to 95
Rated Wind Velocity-M/S	60
Mounting way	Mast
Mast Diameter-MM	About Φ50 to 75



Installation Demonstrations



Typical pattern

820~896MHz



870~960MHz

