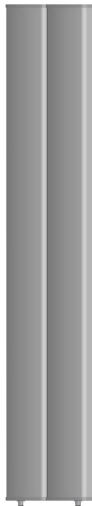




# Directional Sector Antenna



Tip: Pictures are for reference only.  
Please refer to physical objects.

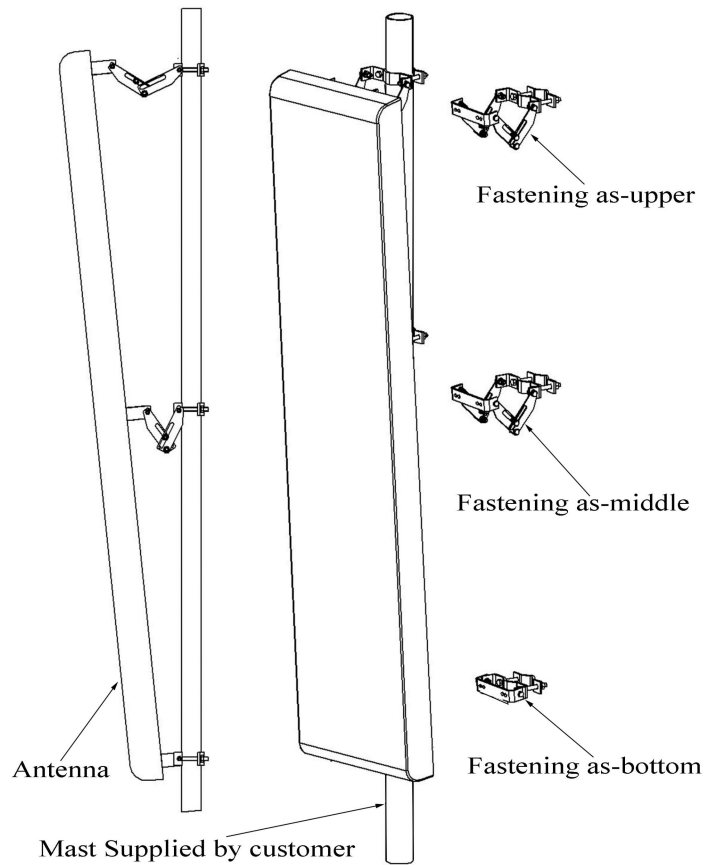
- Model: FTD-0809SH2020DP30A
- Name: Directional Sector Antenna
- Freq.Range: 820 to 896 / 870 to 960 MHz
- Communications system: CDMA/GSM,  
Wireless cellular Communication System,  
Wireless trunking communication system
- Application scenario: Point to multipoint,  
Repeater antenna, Base station antenna,  
Wireless digital transmission,  
Long-distance communication,  
Wireless data and image transmission,  
Outdoor signal directional coverage

| Electrical Specifications               |                    |            |
|---|--------------------|------------|
| Freq.Range-MHz                          | 820 to 896         | 870 to 960 |
| Polarization                            | ±45°               |            |
| Gain-dBi                                | 2×19.5             | 2×20       |
| Beam Electrical Downtilt-°              | 0                  |            |
| Half-power beam width-°                 | H:33 E:8           | H:30 E:7.5 |
| First upper sidelobe suppression        | N/A                |            |
| F/B-dB                                  | ≥ 27               |            |
| Cross-pol-isolation-dB                  | ≥28                |            |
| Cross-pol. Discrimination_XPD-dB        | ≥15 (±30°≥10)      |            |
| Impedance-Ω                             | 50                 |            |
| VSWR                                    | ≤ 1.5              |            |
| Third-order passive intermodulation-dBc | ≤-150dBc (2×43dBm) |            |
| Max.Power-W                             | 500                |            |
| Lightning Protection                    | DC Grounded        |            |

| Mechanical Specifications  |                   |
|----------------------------|-------------------|
| Connector                  | 2×N female        |
| Connector Position         | Bottom            |
| Dimension-MM               | About 2530×570×85 |
| Weight-KG                  | About 40          |
| Radome material            | UPVC              |
| Radome color               | Gray              |
| Mechanical tilt-°          | 0 to 10           |
| Operational Temperature-°C | -40 to 60         |
| Storage Temperature-°C     | -55 to 85         |
| Relative Humidity-%        | 5 to 95           |
| Rated Wind Velocity-M/S    | 60                |
| Mounting way               | Mast 【Φ50 to 115】 |

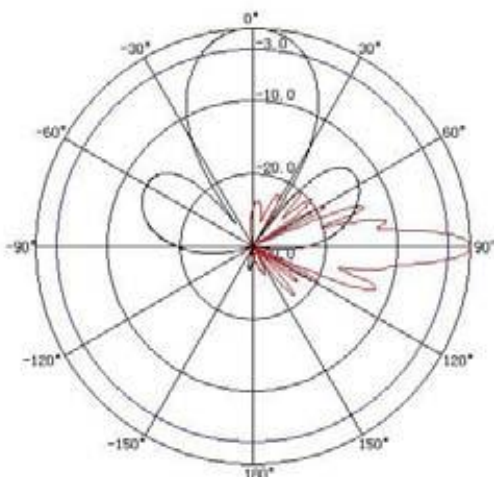


## Installation Demonstrations



## Typical pattern

**820~896MHz**



**870~960MHz**

