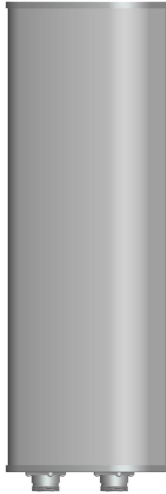




Directional Sector Antenna



- Model: FTD-0809SH1515DP65A
- Name: Directional Sector Antenna
- Freq.Range: 820 to 896 / 870 to 960 MHz
- Communications system: CDMA/GSM,
Wireless cellular Communication System,
Wireless trunking communication system
- Application scenario: Point to multipoint,
Repeater antenna, Base station antenna,
Wireless digital transmission,
Long-distance communication,
Wireless data and image transmission,
Outdoor signal directional coverage

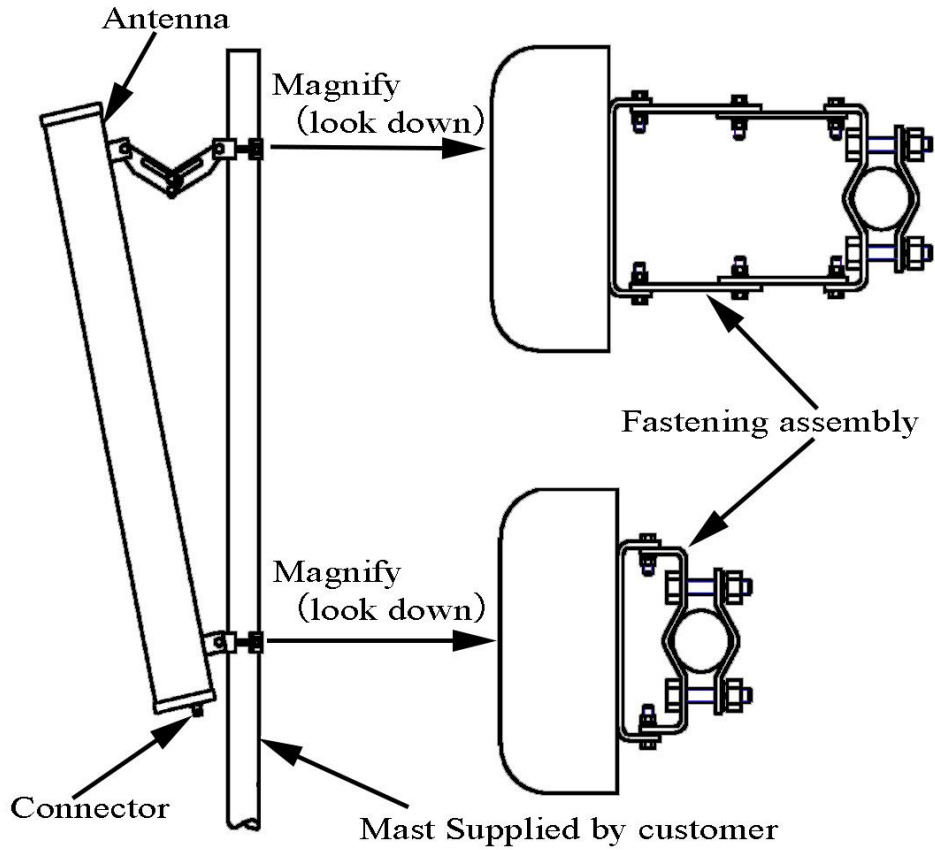
Tip: Pictures are for reference only.
Please refer to physical objects.

Electrical Specifications			
Freq.Range-MHz	820 to 896		870 to 960
Polarization	±45°		
Gain-dBi	2×14.5		2×15
Beam Electrical Downtilt-°	0		
Half-power beam width-°	H:68	E:15	H:65 E:14
First upper sidelobe suppression	N/A		
F/B-dB	≥ 25		
Cross-pol-isolation-dB	≥28		
Cross-pol. Discrimination_XPD-dB	≥15 (±60°≥10)		
Impedance-Ω	50		
VSWR	≤ 1.5		
Third-order passive intermodulation-dBc	≤-150dBc (2×43dBm)		
Max.Power-W	500		
Lightning Protection	DC Grounded		

Mechanical Specifications	
Connector	2×N female
Connector Position	Bottom
Dimension-MM	About 1270×280×85
Weight-KG	About 9.2
Radome material	UPVC
Radome color	Gray
Mechanical tilt-°	0 to 14
Operational Temperature-°C	-40 to 60
Storage Temperature-°C	-55 to 85
Relative Humidity-%	5 to 95
Rated Wind Velocity-M/S	60
Mounting way	Mast 【Φ50 to 75】

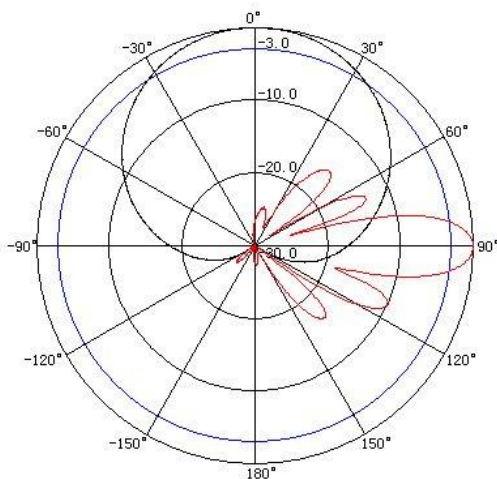


Installation Demonstrations



Typical pattern

820~896MHz



870~960MHz

