



Directional Sector Antenna



- Model: FTD-0809SH1414DP90A
- Name: Directional Sector Antenna
- Freq.Range: 820 to 896 / 870 to 960 MHz
- Communications system: CDMA/GSM,
Wireless cellular Communication System,
Wireless trunking communication system
- Application scenario: Point to multipoint,
Repeater antenna, Base station antenna,
Wireless digital transmission,
Long-distance communication,
Wireless data and image transmission,
Outdoor signal directional coverage

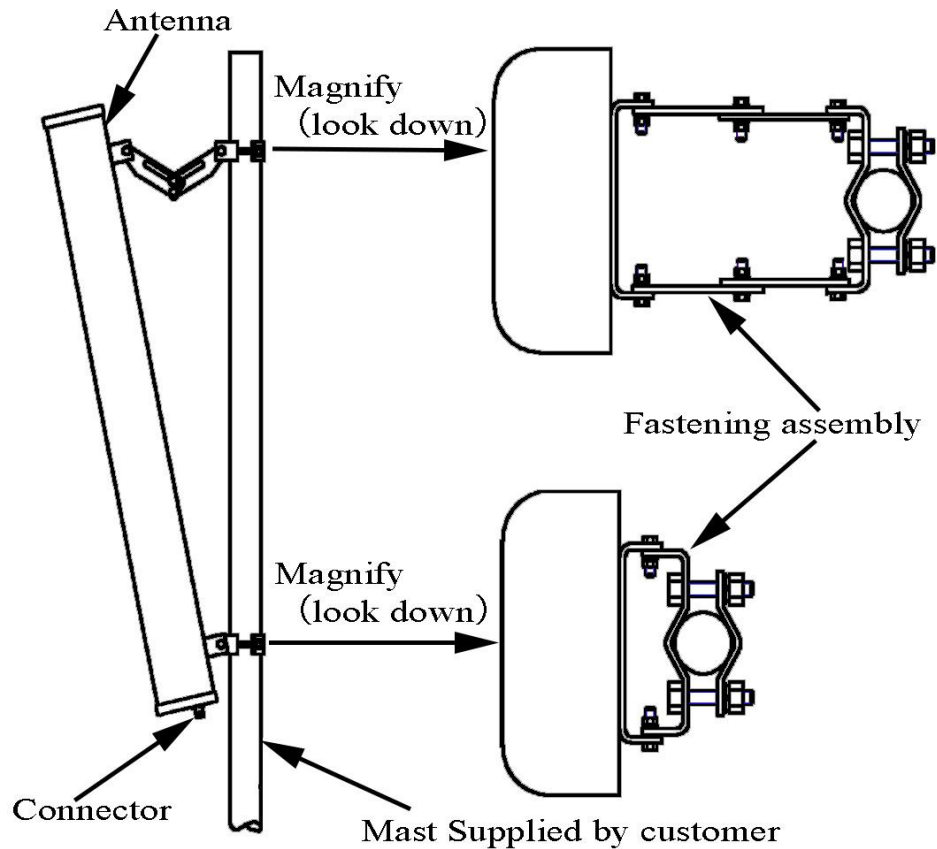
Tip: Pictures are for reference only.
Please refer to physical objects.

| Electrical Specifications | | | | |
|---|--------------------|------|------------|------|
| Freq.Range-MHz | 820 to 896 | | 870 to 960 | |
| Polarization | ±45° | | | |
| Gain-dBi | 2×13.5 | | 2×14 | |
| Beam Electrical Downtilt-° | 0 | | | |
| Half-power beam width-° | H:90 | E:15 | H:88 | E:14 |
| First upper sidelobe suppression | N/A | | | |
| F/B-dB | ≥ 23 | | | |
| Cross-pol-isolation-dB | ≥28 | | | |
| Cross-pol. Discrimination_XPD-dB | ≥15 (±60°≥10) | | | |
| Impedance-Ω | 50 | | | |
| VSWR | ≤ 1.5 | | | |
| Third-order passive intermodulation-dBc | ≤-150dBc (2×43dBm) | | | |
| Max.Power-W | 500 | | | |
| Lightning Protection | DC Grounded | | | |

| Mechanical Specifications | |
|----------------------------|--------------------|
| Connector | 2×N female |
| Connector Position | Bottom |
| Dimension-MM | About 1270×270×137 |
| Weight-KG | About 9.5 |
| Radome material | UPVC |
| Radome color | Gray |
| Mechanical tilt-° | 0 to 14 |
| Operational Temperature-°C | -40 to 60 |
| Storage Temperature-°C | -55 to 85 |
| Relative Humidity-% | 5 to 95 |
| Rated Wind Velocity-M/S | 60 |
| Mounting way | Mast 【Φ50 to 75】 |

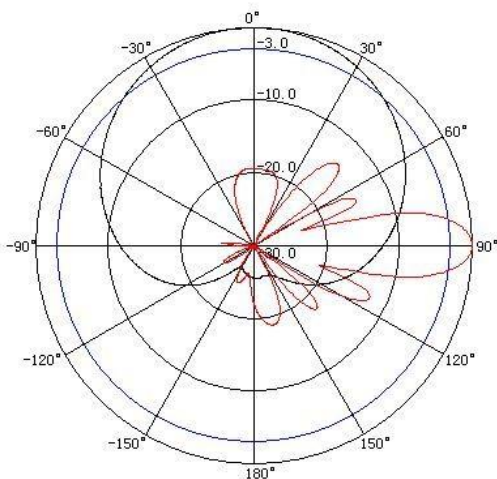


Installation Demonstrations



Typical pattern

820~896MHz



870~960MHz

