



## Directional Sector Antenna



- Model: FTD-0821SH1718DP65A
- Name: Directional Sector Antenna
- Freq.Range: 820 to 960 / 1710 to 2170 MHz
- Communications system: GSM/CDMA/FDD, Wireless trunking communication system, Wireless access communication system, Wireless cellular Communication System
- Application scenario: Point to multipoint, Repeater antenna, Base station antenna, Outdoor signal directional coverage

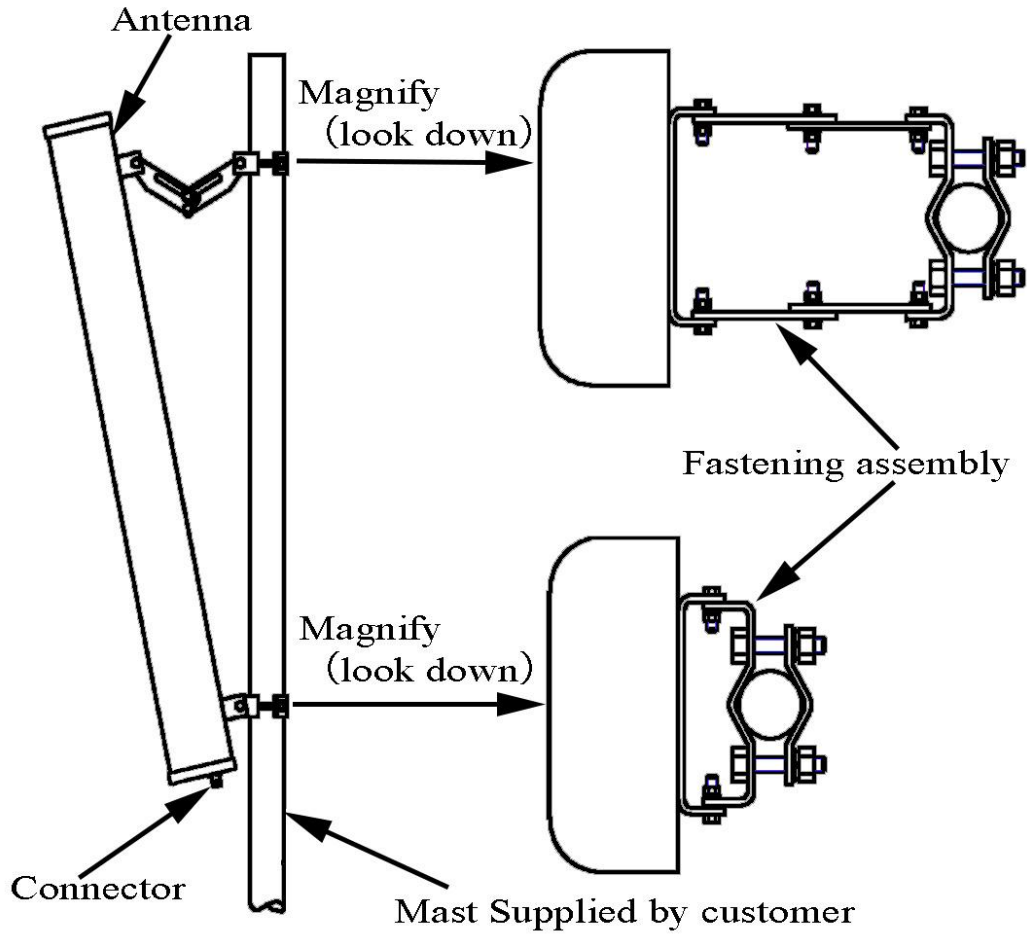
Tip: Pictures are for reference only.  
Please refer to physical objects.

Electrical Specifications		
Freq.Range-MHz	820 to 960	1710 to 2170
Bandwidth-MHz	140	460
Polarization	±45°	
Gain-dBi	2×17	2×18
Beam Electrical Downtilt-°	0	
Half-power beam width-°	H:65 E:8.5	H:65 E:5.5
F/B-dB	≥ 25	
Cross-pol-isolation-dB	≥28	
Cross-pol. Discrimination_XPD-dB	≥15 (±60°≥10)	
Impedance-Ω	50	
VSWR	≤ 1.5	
Third-order passive intermodulation-dBc	≤-150dBc (2×43dBm)	
Max.Power-W	200	
Lightning Protection	DC Grounded	

Mechanical Specifications	
Connector	4×N female
Connector Position	Bottom
Dimension-MM	About 1980×270×137
Weight-KG	About 16
Radome material and color	Gray UPVC
Mechanical tilt-°	0 to 10
Operational Temperature-°C	-40 to 60
Storage Temperature-°C	-55 to 85
Relative Humidity-%	5 to 95
Rated Wind Velocity-M/S	60
Mounting way	Mast
Mast Diameter-MM	About Φ50 to 75

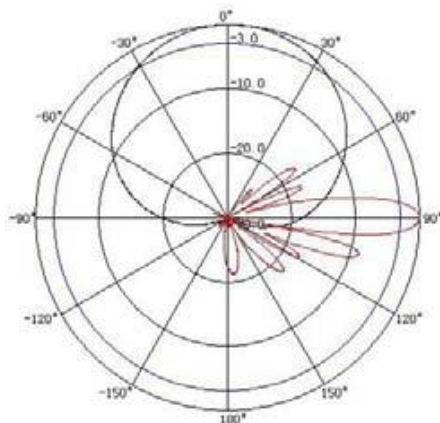


## Installation Demonstrations



## Typical pattern

820 to 960MHz



1710 to 2170MHz

