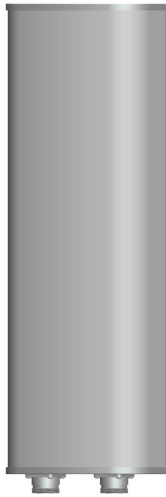




Directional Sector Antenna



- Model: FTD-0825SH1215DP65A
- Name: Directional Sector Antenna
- Freq.Range: 820 to 960 / 1710 to 2200 / 2200 to 2500 MHz
- Communications system: WIFI/WLAN/ISM, GSM/CDMA/EGSM/DCS1800/MMDS, TD-SCDMA/WCDMA/TDD&FDD-LTE, Wireless trunking communication system, Wireless cellular Communication System
- Application scenario: Point to multipoint, Repeater antenna, Base station antenna, Outdoor signal directional coverage

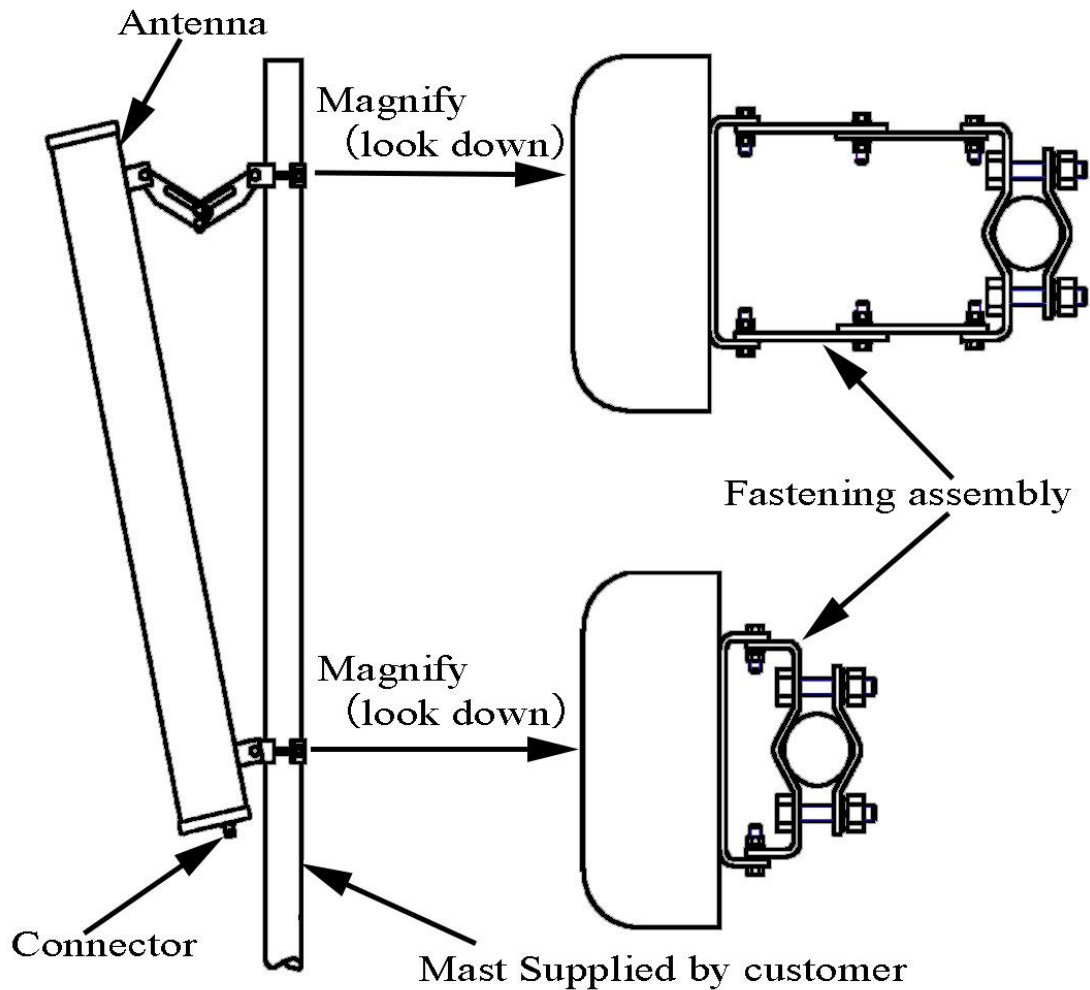
Tip: Pictures are for reference only.
Please refer to physical objects.

Electrical Specifications			
Freq.Range-MHz	820 to 960	1710 to 2200	2200 to 2500
Bandwidth-MHz	140	490	300
Polarization	±45°		
Gain-dBi	2×12	2×14	2×14.5
Beam Electrical Downtilt-°	0		
Half-power beam width-°	H:65 E:30	H:68 E:15	H:60 E:14
First upper sidelobe suppression	N/A		
Cross-pol. Discrimination_XPD-dB	≥15 (±60°≥10)		
Third-order passive intermodulation-dBc	≤-150dBc (2×43dBm)		
Cross-pol-isolation-dB	≥28	≥25	≥22
F/B-dB	≥ 25		
Impedance-Ω	50		
VSWR	≤ 1.5		
Max.Power-W	200		
Lightning Protection	DC Grounded		

Mechanical Specifications	
Connector	2×N female
Connector Position	Bottom
Dimension-MM	About 1270×280×85
Weight-KG	About 9.5
Radome material and color	Gray UPVC
Mechanical tilt-°	0 to 14
Operational Temperature-°C	-40 to 60
Storage Temperature-°C	-55 to 85
Relative Humidity-%	5 to 95
Rated Wind Velocity-M/S	60
Mounting way	Mast 【Φ50 to 75MM】

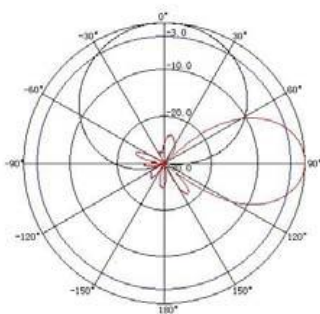


Installation Demonstrations

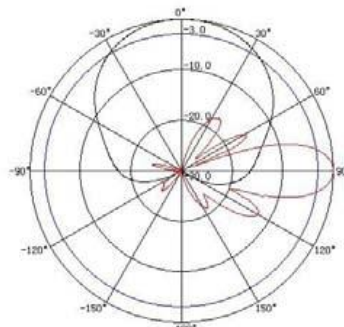


Typical pattern

820 to 960MHz



1710 to 2200MHz



2200 to 2500MHz

