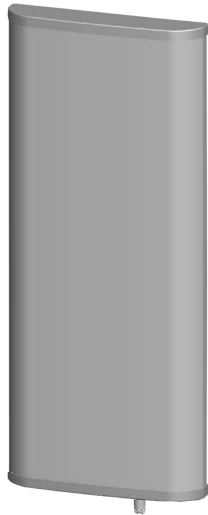




Directional Sector Antenna



- Model: FTD-0827SH0912VP65A
- Name: Directional Sector Antenna
- Freq.Range: 824 to 960 / 1710 to 2690 MHz
- Communications system: WIFI/WLAN/ISM, GSM/CDMA/EGSM/DCS1800/MMDS, TD-SCDMA/WCDMA/TDD&FDD-LTE, Wireless trunking communication system, Wireless cellular Communication System
- Application scenario: Point to multipoint, Repeater antenna, Base station antenna, Outdoor signal directional coverage

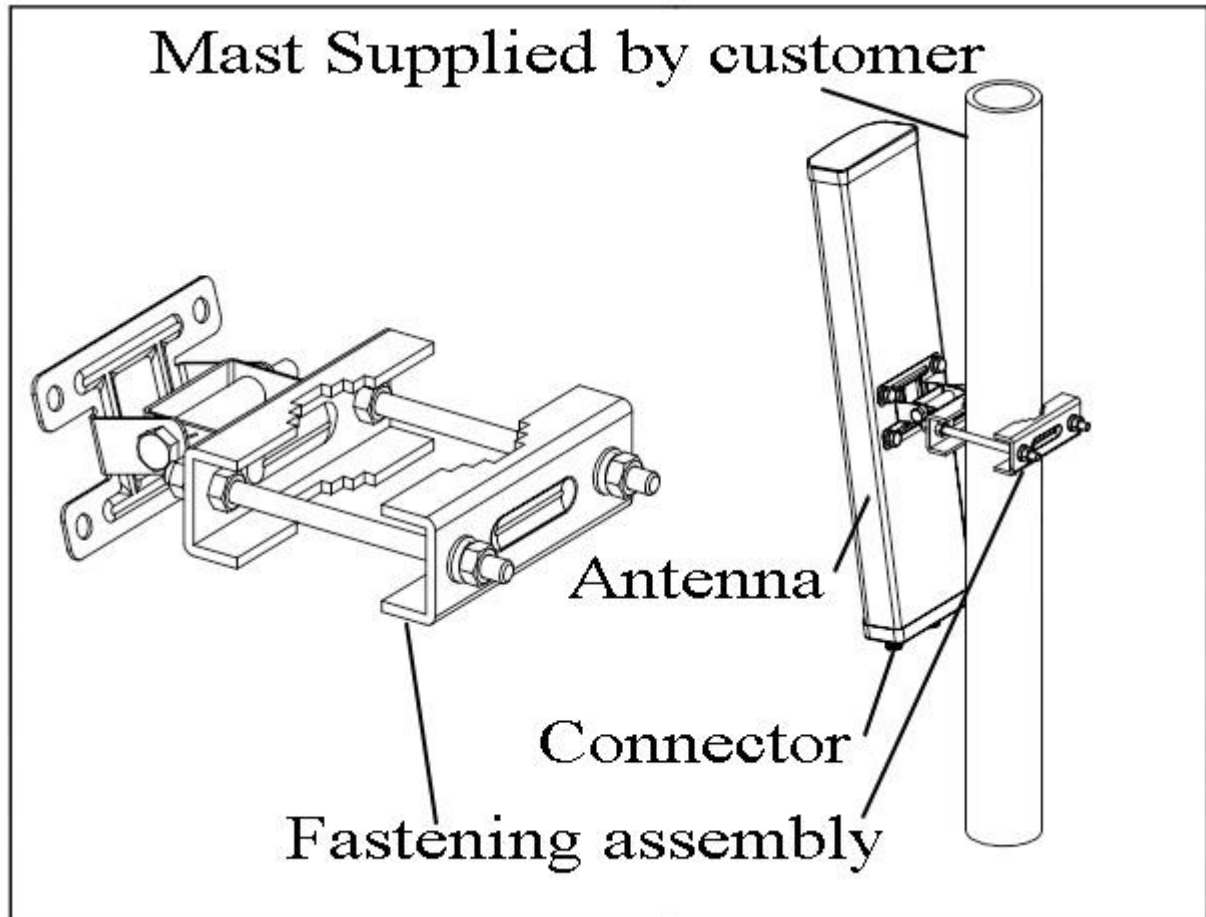
Tip: Pictures are for reference only.
Please refer to physical objects.

Electrical Specifications		
Freq.Range-MHz	824 to 960	1710 to 2690
Bandwidth-MHz	136	980
Polarization	Vertical	
Gain-dBi	9	11.5
Beam Electrical Downtilt-°	0	
Half-power beam width-°	H:68 E:60	H:65 E:30
First upper sidelobe suppression	N/A	
Third-order passive intermodulation-dBc	≤-150dBc (2×43dBm)	
F/B-dB	≥ 20	≥ 25
Impedance-Ω	50	
VSWR	≤ 1.5	≤ 1.7
Max.Power-W	200	
Lightning Protection	DC Grounded	

Mechanical Specifications	
Connector	N female
Connector Position	Bottom
Dimension-MM	About 350×320×80
Weight-KG	About 3.5
Radome material	UPVC
Radome color	Gray
Mechanical tilt-°	0 to 15
Operational Temperature-°C	-40 to 60
Storage Temperature-°C	-55 to 85
Relative Humidity-%	5 to 95
Rated Wind Velocity-M/S	60
Mounting way	Mast
Mast Diameter-MM	About Φ50 to 75

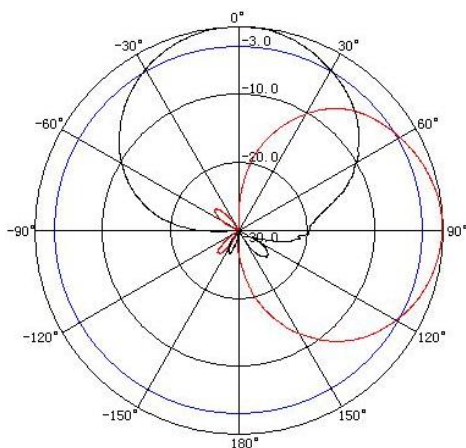


Installation Demonstrations



Typical pattern

824 to 960MHz



1710 to 2690MHz

