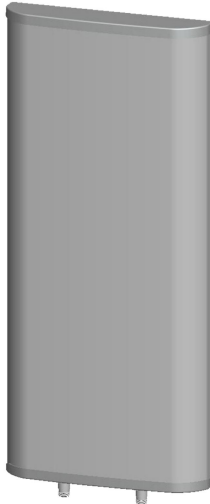




Directional Sector Antenna



- Model: FTD-0827SH1215DP65A
- Name: Directional Sector Antenna
- Freq.Range: 806 to 960 / 1710 to 2690 MHz
- Communications system: WIFI/WLAN/ISM, GSM/CDMA/EGSM/DCS1800/MMDS, TD-SCDMA/WCDMA/TDD&FDD-LTE, Wireless trunking communication system, Wireless cellular Communication System
- Application scenario: Point to multipoint, Repeater antenna, Base station antenna, Outdoor signal directional coverage

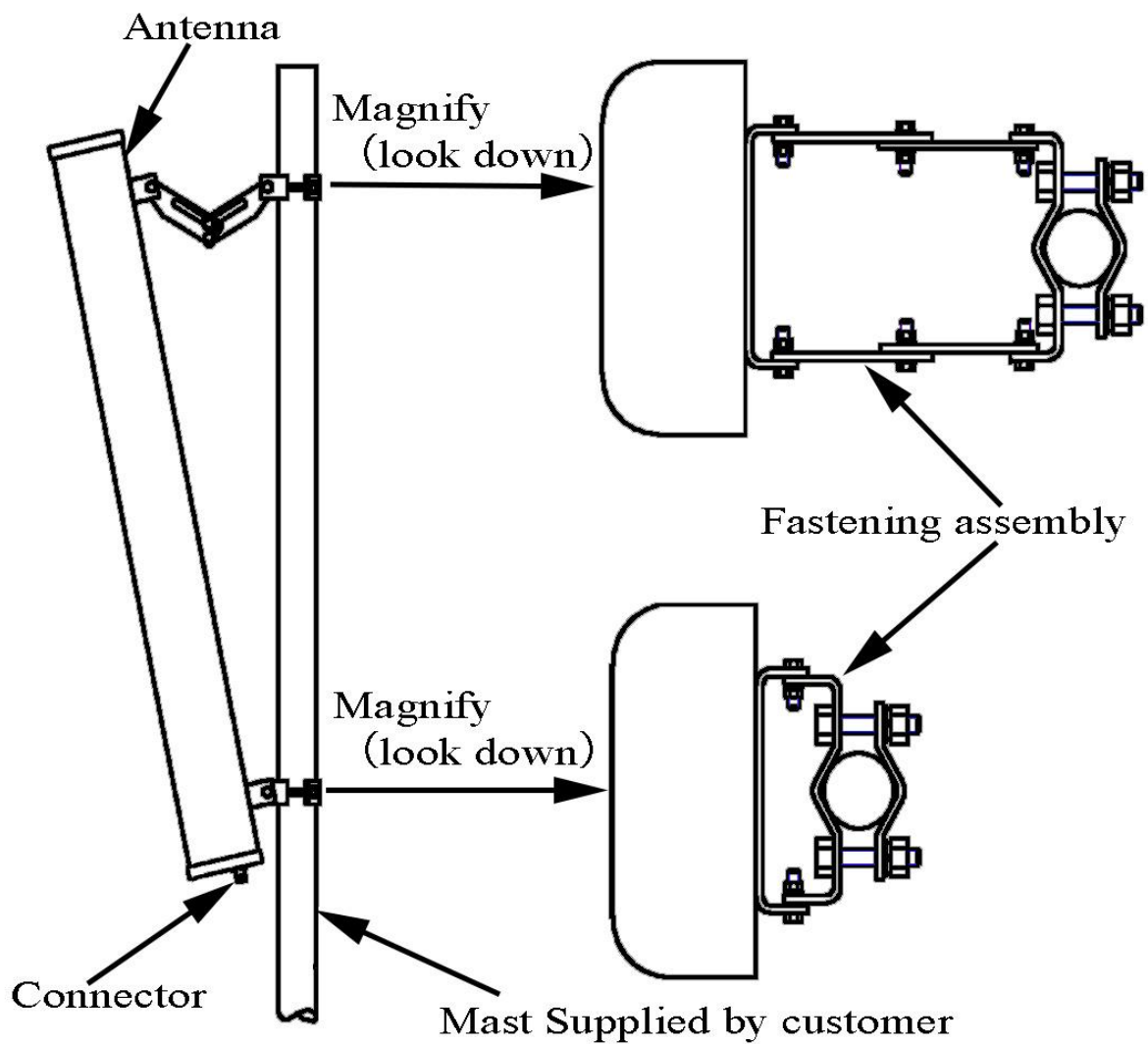
Tip: Pictures are for reference only.
Please refer to physical objects.

Electrical Specifications		
Freq.Range-MHz	806 to 960	1710 to 2690
Bandwidth-MHz	156	980
Polarization	±45°	
Gain-dBi	2×12	2×14.5
Beam Electrical Downtilt-°	0	
Half-power beam width-°	H:65 E:30	H:65 E:15
First upper sidelobe suppression	N/A	
Cross-pol. Discrimination_XPD-dB	≥15 (±60°≥10)	
Third-order passive intermodulation-dBc	≤-150dBc (2×43dBm)	
Cross-pol-isolation-dB	≥25	≥25
F/B-dB	≥20	≥25
Impedance-Ω	50	
VSWR	≤1.5	≤1.7
Max.Power-W	200	
Lightning Protection	DC Grounded	

Mechanical Specifications	
Connector	2×N female
Connector Position	Bottom
Dimension-MM	About 650×320×80
Weight-KG	About 5
Radome material and color	Gray UPVC
Mechanical tilt-°	0 to 10
Operational Temperature-°C	-40 to 60
Storage Temperature-°C	-55 to 85
Relative Humidity-%	5 to 95
Rated Wind Velocity-M/S	60
Mounting way	Mast 【Φ50 to 75MM】

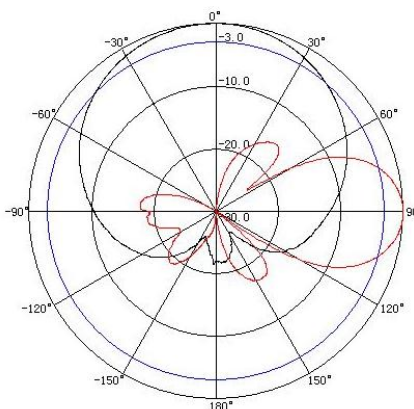


Installation Demonstrations



Typical pattern

806 to 960MHz



1710 to 2690MHz

