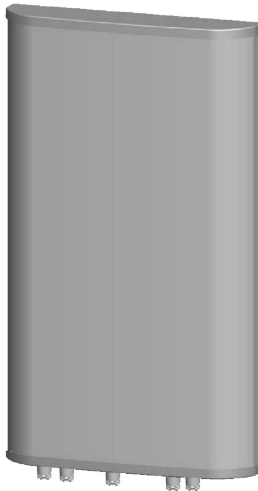




Directional Sector Antenna



Tip: Pictures are for reference only.
Please refer to physical objects.

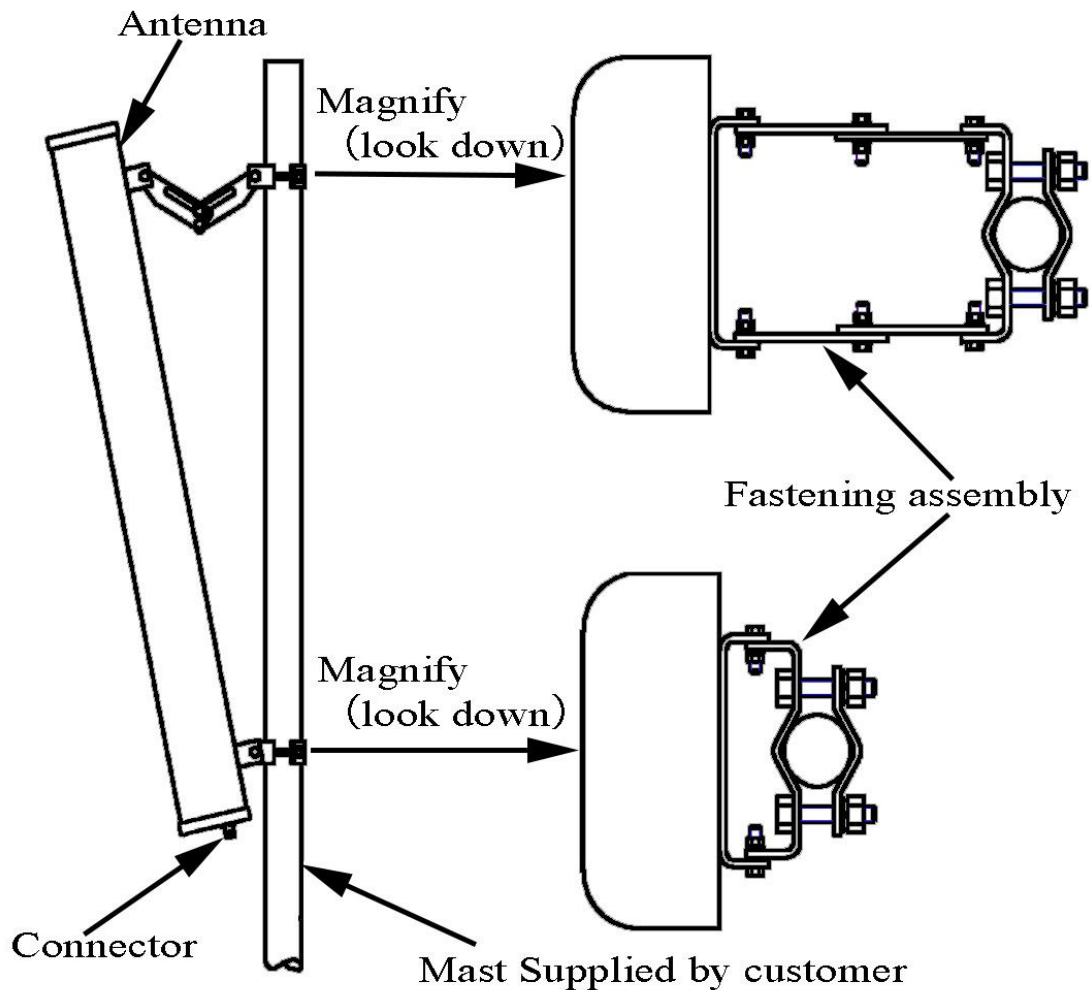
- Model: FTD-0927SH0812DP65A
- Name: Directional Sector Antenna
- Freq.Range: 890 to 960 / 2400 to 2500 / 1710 to 2690 MHz
- Communications system: WIFI/WLAN/ISM, GSM/CDMA/EGSM/DCS1800/MMDS, TD-SCDMA/WCDMA/TDD&FDD-LTE, Wireless trunking communication system, Wireless cellular Communication System
- Application scenario: Point to multipoint, Repeater antenna, Base station antenna, Outdoor signal directional coverage

Electrical Specifications			
Freq.Range-MHz	890 to 960	2400 to 2500	1710 to 2690
Bandwidth-MHz	70	100	980
Polarization	Vertical	Vertical and Horizontal	±45°
Gain-dBi	8	2×12	2×12
Beam Electrical Downtilt-°	0		
Half-power beam width-°	H:65 E:55	H:65 E:30	H:65 E:30
First upper sidelobe suppression	N/A		
Cross-pol. Discrimination_XPD-dB	≥15 (±60°≥10)		
Third-order passive intermodulation-dBc	≤-150dBc (2×43dBm)		
Cross-pol-isolation-dB	≥28	≥25	≥22
F/B-dB	≥20	≥25	≥25
Impedance-Ω	50		
VSWR	≤1.5		
Max.Power-W	200		
Lightning Protection	DC Grounded		

Mechanical Specifications	
Connector	5×N female
Connector Position	Bottom
Dimension-MM	About 580×320×80
Weight-KG	About 5
Radome material and color	Gray UPVC
Mechanical tilt-°	0 to 10
Operational Temperature-°C	-40 to 60
Storage Temperature-°C	-55 to 85
Relative Humidity-%	5 to 95
Rated Wind Velocity-M/S	60
Mounting way	Mast 【Φ50 to 75MM】

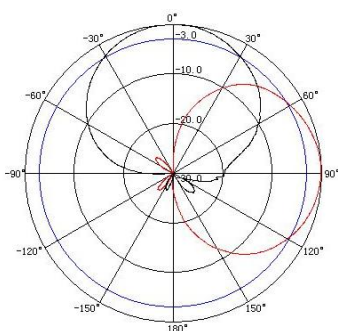


Installation Demonstrations

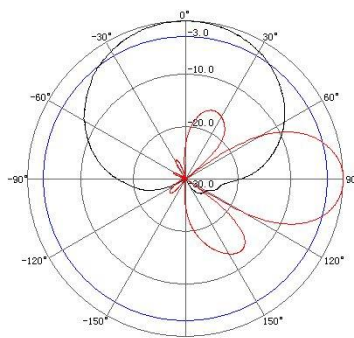


Typical pattern

890 to 960MHz



2400 to 2500MHz



1710 to 2690MHz

