



Directional Sector Antenna



Tip: Pictures are for reference only.
Please refer to physical objects.

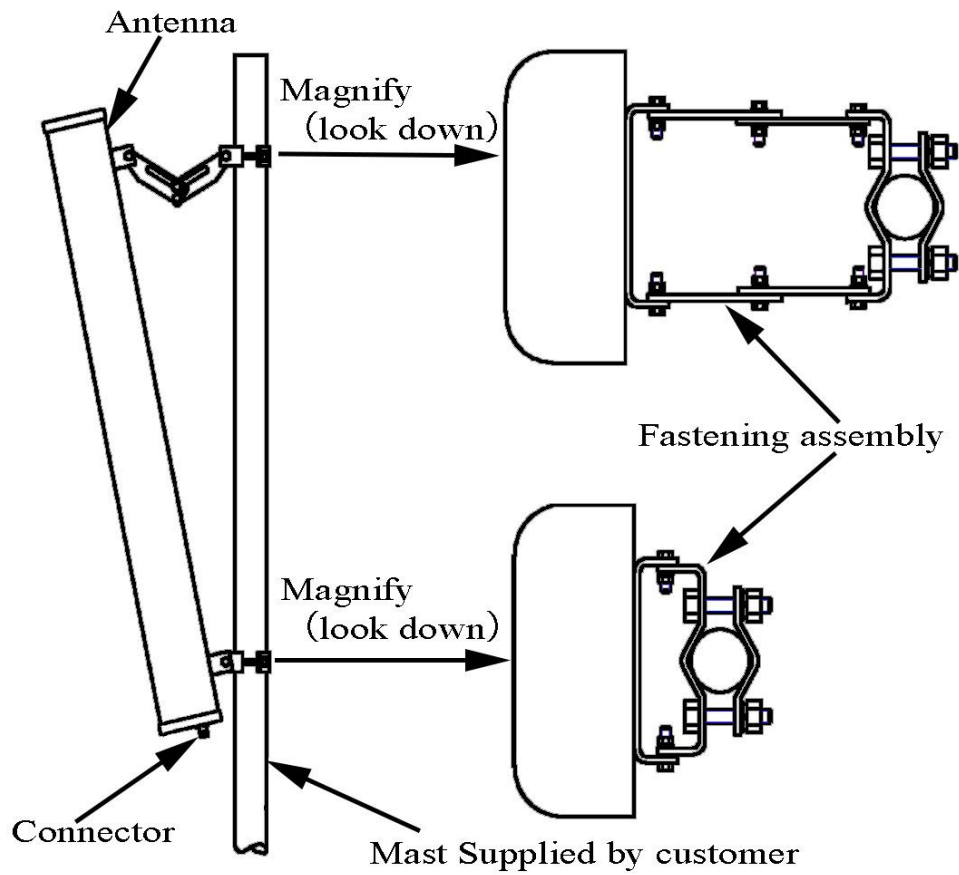
- Model: FTD-0838SH1717DP30B4
- Name: Directional Sector Antenna
- Freq.Range: 824 to 960 / 2500 to 2690 / 3300 to 3800 / 1710 to 2690 MHz
- Communications system: WLAN/WIFI/ISM, GSM/CDMA/EGSM/DCS1800/MMDS/5G, TD-SCDMA/WCDMA/TDD&FDD-LTE, Wireless trunking communication system, Wireless access communication system, Wireless cellular Communication System
- Application scenario: Point to multipoint, Repeater antenna, Base station antenna, Outdoor signal directional coverage

| Electrical Specifications | | | |
|---|--------------------|---------------------------|-----------------|
| Connector | Port 1 | Port 2 | Port 3 / Port 4 |
| Freq.Range-MHz | 824 to 960 | 2500 to 2690/3300 to 3800 | 1710 to 2690 |
| Polarization | Vertical | Vertical | ±45° |
| Gain-dBi | 17 | 17 | 17 |
| Beam Electrical Downtilt-° | 0 | | |
| Half-power beam width-° | H:35 E:14 | H:65 E:10 | H:33 E:14 |
| Cross-pol. Discrimination_XPD-dB | ≥17 (±60°≥8) | | |
| Third-order passive intermodulation-dBc | ≤-150dBc (2×43dBm) | | |
| Cross-pol-isolation-dB | / | / | ≥28 |
| F/B-dB | ≥ 18 | ≥ 20 | ≥ 20 |
| Impedance-Ω | 50 | | |
| VSWR | ≤ 1.5 | ≤ 2.0 | ≤ 1.7 |
| Max.Power-W | 200 | | |
| Lightning Protection | DC Grounded | | |

| Mechanical Specifications | |
|----------------------------|--------------------|
| Connector | 4×N female |
| Connector Position | Bottom |
| Dimension-MM | About 1620×320×106 |
| Weight-KG | About 14 |
| Radome material and color | Gray UPVC |
| Mechanical tilt-° | 0 to 10 |
| Operational Temperature-°C | -40 to 60 |
| Storage Temperature-°C | -55 to 85 |
| Relative Humidity-% | 5 to 95 |
| Rated Wind Velocity-M/S | 60 |
| Mounting way | Mast |
| Mast Diameter-MM | About Φ40 to 70 |



Installation Demonstrations



Connector

