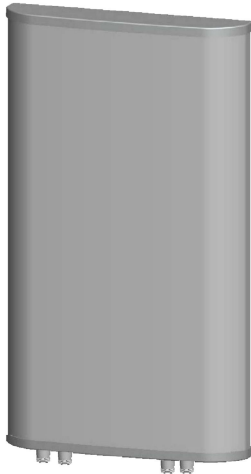




Directional Sector Antenna



Tip: Pictures are for reference only.
Please refer to physical objects.

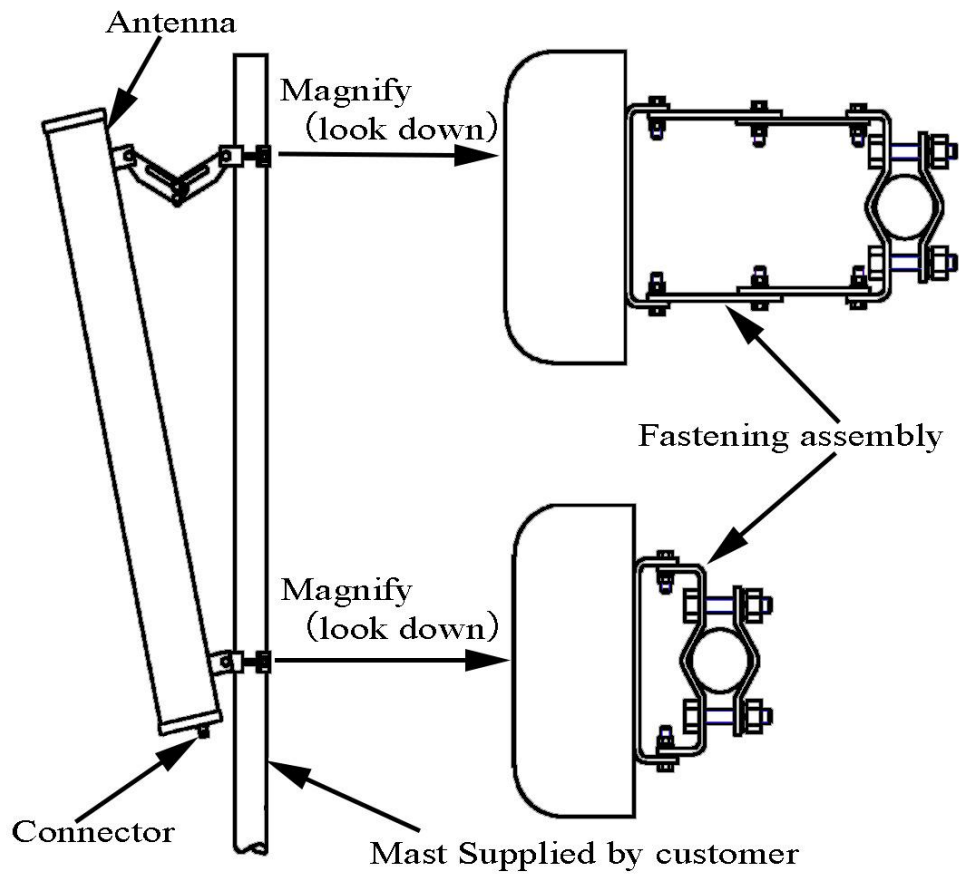
- Model: FTD-0838SH1719DP30A4
- Name: Directional Sector Antenna
- Freq.Range: 824 to 960 / 2500 to 2690 / 3300 to 3800 / 1710 to 2690 MHz
- Communications system: WLAN/WIFI/ISM, GSM/CDMA/EGSM/DCS1800/MMDS/5G, TD-SCDMA/WCDMA/TDD&FDD-LTE, Wireless trunking communication system, Wireless access communication system, Wireless cellular Communication System
- Application scenario: Point to multipoint, Repeater antenna, Base station antenna, Outdoor signal directional coverage

Electrical Specifications			
Connector	Port 1	Port 2	Port 3 / Port 4
Freq.Range-MHz	824 to 960	2500 to 2690/3300 to 3800	1710 to 2690
Polarization	Vertical	Vertical	±45°
Gain-dBi	17	18 / 19	18
Beam Electrical Downtilt-°	0		
Half-power beam width-°	H:35 E:8	H:33 E:8 / H:30 E:6.5	H:35 E:8
Cross-pol. Discrimination_XPD-dB	≥17 (±60°≥8)		
Third-order passive intermodulation-dBc	≤-150dBc (2×43dBm)		
Cross-pol-isolation-dB	/	/	≥28
F/B-dB	≥ 25	≥ 25	≥ 25
Impedance-Ω	50		
VSWR	≤ 1.5	≤ 2.0	≤ 1.7
Max.Power-W	200		
Lightning Protection	DC Grounded		

Mechanical Specifications	
Connector	4×N female
Connector Position	Bottom
Dimension-MM	About 1800×515×100
Weight-KG	About 15
Radome material and color	Gray UPVC
Mechanical tilt-°	0 to 10
Operational Temperature-°C	-40 to 60
Storage Temperature-°C	-55 to 85
Relative Humidity-%	5 to 95
Rated Wind Velocity-M/S	60
Mounting way	Mast
Mast Diameter-MM	About Φ40 to 70



Installation Demonstrations



Connector

