



Directional Sector Antenna



- Model: FTD-0918SH1718DP65A
- Name: Directional Sector Antenna
- Freq.Range: 870 to 960 / 1710 to 1880 MHz
- Communications system: GSM/FDD,
Wireless trunking communication system,
Wireless cellular Communication System,
Wireless access communication system
- Application scenario: Point to multipoint,
Base station antenna, Wireless access,
Outdoor signal directional coverage

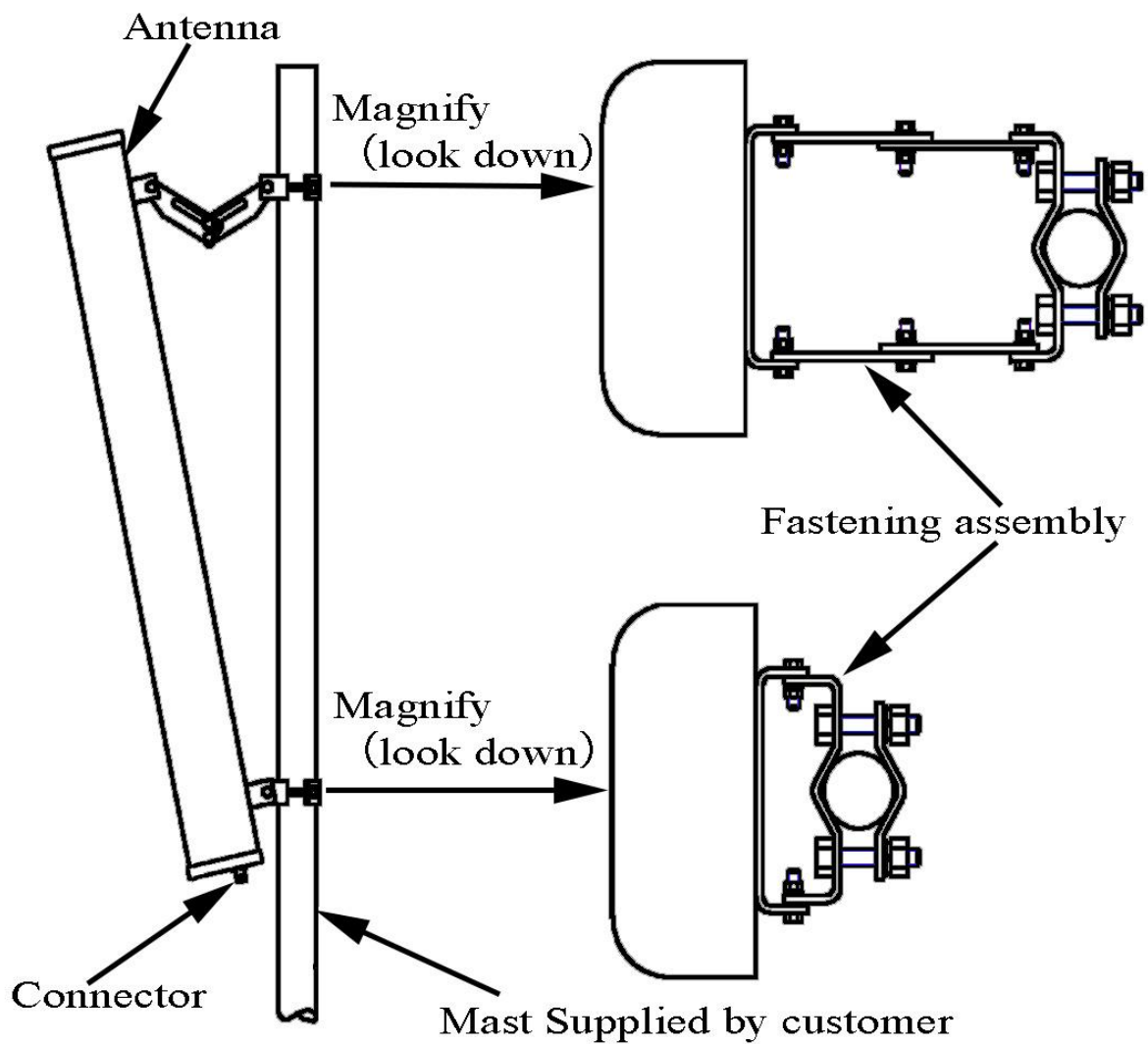
Tip: Pictures are for reference only.
Please refer to physical objects.

Electrical Specifications		
Freq.Range-MHz	870 to 960	1710 to 1880
Bandwidth-MHz	90	170
Polarization	±45°	
Gain-dBi	2×17	2×18
Beam Electrical Downtilt-°	0	
Half-power beam width-°	H:65 E:8.5	H:65 E:6.5
First upper sidelobe suppression	N/A	
Cross-pol. Discrimination_XPD-dB	≥15 (±60°≥10)	
Third-order passive intermodulation-dBc	≤-150dBc (2×43dBm)	
Cross-pol-isolation-dB	≥28	≥28
F/B-dB	≥25	≥25
Impedance-Ω	50	
VSWR	≤1.5	≤1.5
Max.Power-W	200	
Lightning Protection	DC Grounded	

Mechanical Specifications	
Connector	4×N female
Connector Position	Bottom
Dimension-MM	About 1980×270×137
Weight-KG	About 16
Radome material and color	Gray UPVC
Mechanical tilt-°	0 to 10
Operational Temperature-°C	-40 to 60
Storage Temperature-°C	-55 to 85
Relative Humidity-%	5 to 95
Rated Wind Velocity-M/S	60
Mounting way	Mast 【Φ50 to 75MM】

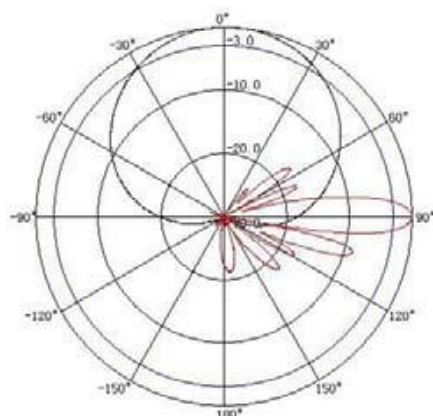


Installation Demonstrations



Typical pattern

870 to 960MHz



1710 to 1880MHz

