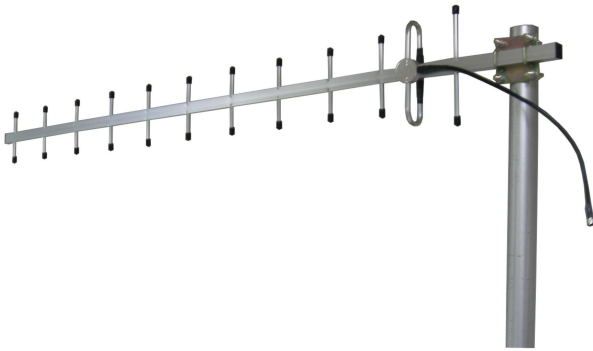




Directional Yagi Antenna



- Model: FTD-915BM12V12A
- Name: Directional Yagi Antenna
- Freq.Range: 902 to 928 MHz
- Communications system: RFID, Radio Frequency Identification
- Application scenario: Point to point, Point to multipoint, Client antenna, Long-distance communication

Tip: Pictures are for reference only.
Please refer to physical objects.

Electrical Specifications	
Freq.Range-MHz	902 to 928
Bandwidth-MHz	26
Unit	12
Polarization	Vertical or Horizontal
Gain-dBi	12
Horizontal Beamwidth-°	36
Vertical Beamwidth-°	32
F/B-dB	≥ 16
Impedance-Ω	50
VSWR	≤ 1.5
Max.Power-W	100

Mechanical Specifications	
Connector	N female or customized
Connector Position	Cable outgoing
Length-M	About 1.2
Weight-KG	About 0.5
Radome material	Aluminium alloy
Operational Temperature-°C	-40 to 60
Storage Temperature-°C	-55 to 85
Relative Humidity-%	5 to 95
Rated Wind Velocity-M/S	60
Mounting way	Mast
Mast Diameter-MM	About Φ40 to 50



Installation Demonstrations

