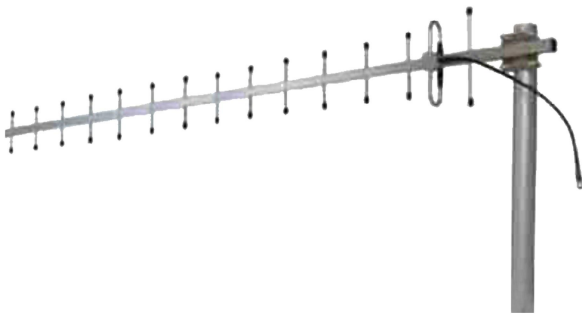




Directional Yagi Antenna



- Model: FTD-915BM13V15A
- Name: Directional Yagi Antenna
- Freq.Range: 902 to 928 MHz
- Communications system: RFID, Radio Frequency Identification
- Application scenario: Point to point, Point to multipoint, Client antenna, Long-distance communication

Tip: Pictures are for reference only.
Please refer to physical objects.

| Electrical Specifications | |
|---------------------------|------------------------|
| Freq.Range-MHz | 902 to 928 |
| Bandwidth-MHz | 26 |
| Unit | 15 |
| Polarization | Vertical or Horizontal |
| Gain-dBi | 13 |
| Horizontal Beamwidth-° | 30 |
| Vertical Beamwidth-° | 30 |
| F/B-dB | ≥ 16 |
| Impedance-Ω | 50 |
| VSWR | ≤ 1.5 |
| Max.Power-W | 100 |

| Mechanical Specifications | |
|----------------------------|------------------------|
| Connector | N female or customized |
| Connector Position | Cable outgoing |
| Length-M | About 1.47 |
| Weight-KG | About 0.6 |
| Radome material | Aluminium alloy |
| Operational Temperature-°C | -40 to 60 |
| Storage Temperature-°C | -55 to 85 |
| Relative Humidity-% | 5 to 95 |
| Rated Wind Velocity-M/S | 60 |
| Mounting way | Mast |
| Mast Diameter-MM | About Φ40 to 50 |



Installation Demonstrations

