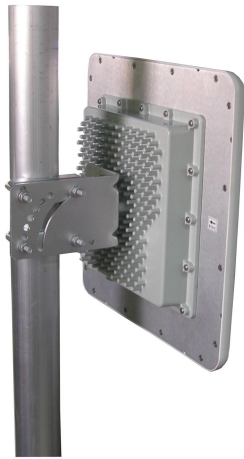




Antenna with mounting cavity



- Model: FTD-915CPB09V65
- Name: Antenna with mounting cavity
- Freq.Range: 902 to 928 MHz
- Communications system: RFID,
Radio Frequency Identification
- Application scenario:
Point to point, Point to multipoint,
Outdoor signal directional coverage

Tip: Pictures are for reference only.
Please refer to physical objects.

Electrical Specifications	
Freq.Range-MHz	902 to 928
Bandwidth-MHz	26
Polarization	Vertical
Gain-dBi	9
Beam Electrical Uptilt-°	0
Half-power beam width-°	H:65 E:60
F/B-dB	≥ 20
Impedance-Ω	50
VSWR	≤ 1.3
Max.Power-W	100
Lightning Protection	DC Grounded

Mechanical Specifications	
Connector	SMA male or Customized
Connector Position	Cable outgoing
Cable Length-CM	20CM or Customized
Antenna Dimension-MM	About 306×306×25
Mounting Cavity Dimension-MM	About 180×180×31 (IN)
Mounting Cavity Connector	2×N female+1×PG16
Weight-KG	About 2.6
Radome material and color	ABS (White)
Mounting Cavity color	Gray
Mechanical tilt-°	0 to 60
Operational Temperature-°C	-40 to 60
Storage Temperature-°C	-55 to 85
Relative Humidity-%	5 to 95
Rated Wind Velocity-M/S	60
Mounting way	Mast 【About Φ35 to 50】



Installation Demonstrations

