



Antenna with mounting cavity



- Model: FTD-915CPB12R35
- Name: Antenna with mounting cavity
- Freq.Range: 902 to 928 MHz
- Communications system: RFID,
Radio Frequency Identification
- Application scenario:
Point to point, Point to multipoint,
Outdoor signal directional coverage

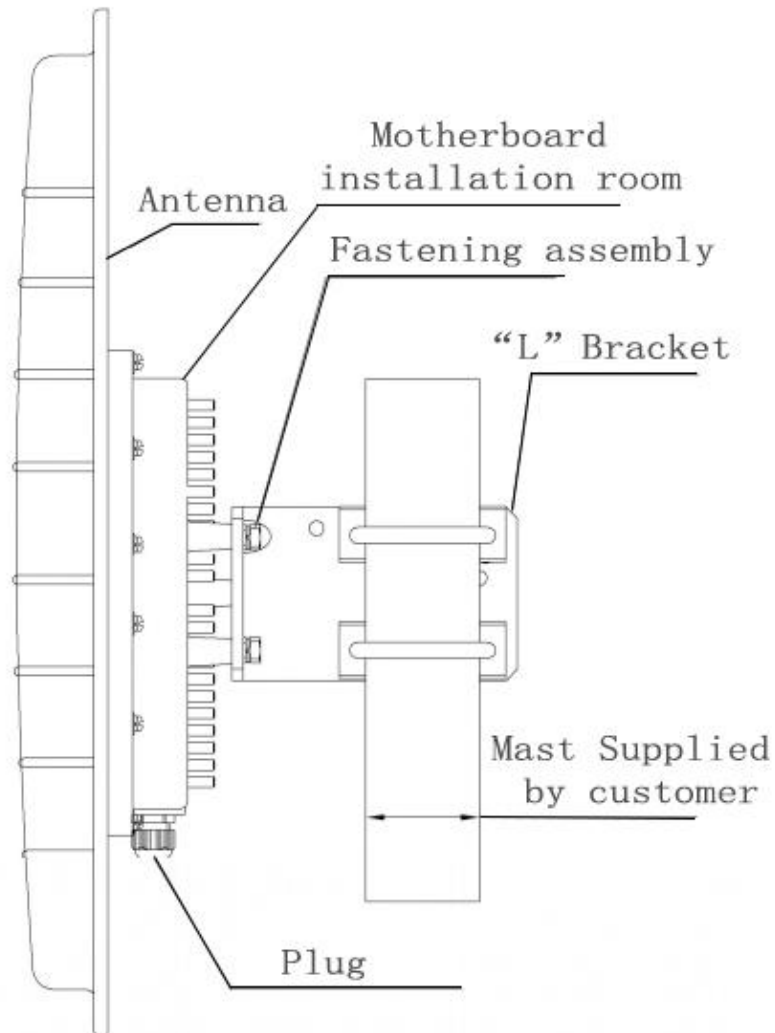
Tip: Pictures are for reference only.
Please refer to physical objects.

Electrical Specifications	
Freq.Range-MHz	902 to 928
Bandwidth-MHz	26
Polarization	Circular
Gain-dBi	12
Beam Electrical Uptilt-°	0
Half-power beam width-°	H:35 E:35
F/B-dB	≥ 20
Impedance-Ω	50
VSWR	≤ 1.3
Max.Power-W	100
Lightning Protection	DC Grounded

Mechanical Specifications	
Connector	SMA bend male or Customized
Connector Position	Cable outgoing
Cable Length-CM	20CM or Customized
Antenna Dimension-MM	About 450×450×40
Mounting Cavity Dimension-MM	About 180×180×31 (IN)
Mounting Cavity Connector	1×N female+1×PG16
Weight-KG	About 4
Radome material and color	ABS (White)
Mounting Cavity color	Gray
Mechanical tilt-°	0 to 60
Operational Temperature-°C	-40 to 60
Storage Temperature-°C	-55 to 85
Relative Humidity-%	5 to 95
Rated Wind Velocity-M/S	60
Mounting way	Mast 【About Φ35 to 50】

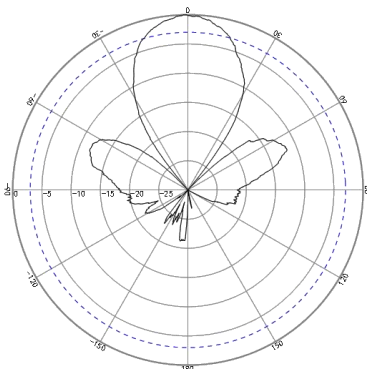


Installation Demonstrations



Typical pattern

H



E

