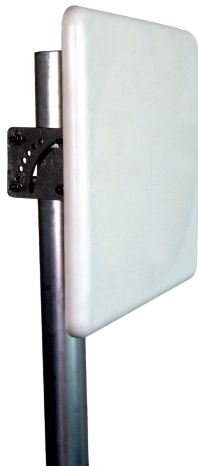




Directional Flat Panel Antenna



- Model: FTD-915PB09V65A
- Name: Directional Flat Panel Antenna
- Freq.Range: 902 to 928 MHz
- Communications system: RFID,
Radio Frequency Identification

Tip: Pictures are for reference only.
Please refer to physical objects.

Electrical Specifications

Freq.Range-MHz	902 to 928
Bandwidth-MHz	26
Polarization	Vertical or Horizontal
Gain-dBi	9
Beam Electrical Downtilt-°	0
Half-power beam width-°	H:65 E:60
F/B-dB	≥ 25
Impedance-Ω	50
VSWR	≤ 1.3
Max.Power-W	20
Lightning Protection	DC Grounded

Mechanical Specifications

Connector	N female
Connector Position	Back
Dimension-MM	About 306×306×25
Weight-KG	About 1.4
Radome material	ABS
Radome color	White
Mechanical tilt-°	0 to 60
Operational Temperature-°C	-40 to 60
Storage Temperature-°C	-55 to 85
Relative Humidity-%	5 to 95
Rated Wind Velocity-M/S	60
Mounting way	Mast
Mast Diameter-MM	Φ40 to 50



Installation Demonstrations

