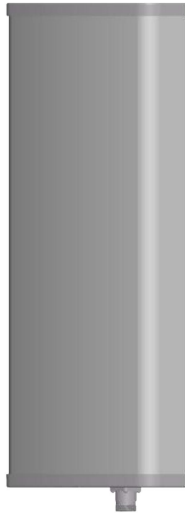




Directional Sector Antenna



- Model: FTD-915SH12H65A
- Name: Directional Sector Antenna
- Freq.Range: 902 to 928 MHz
- Communications system: RFID,
Radio Frequency Identification
- Application scenario:
Outdoor signal directional coverage

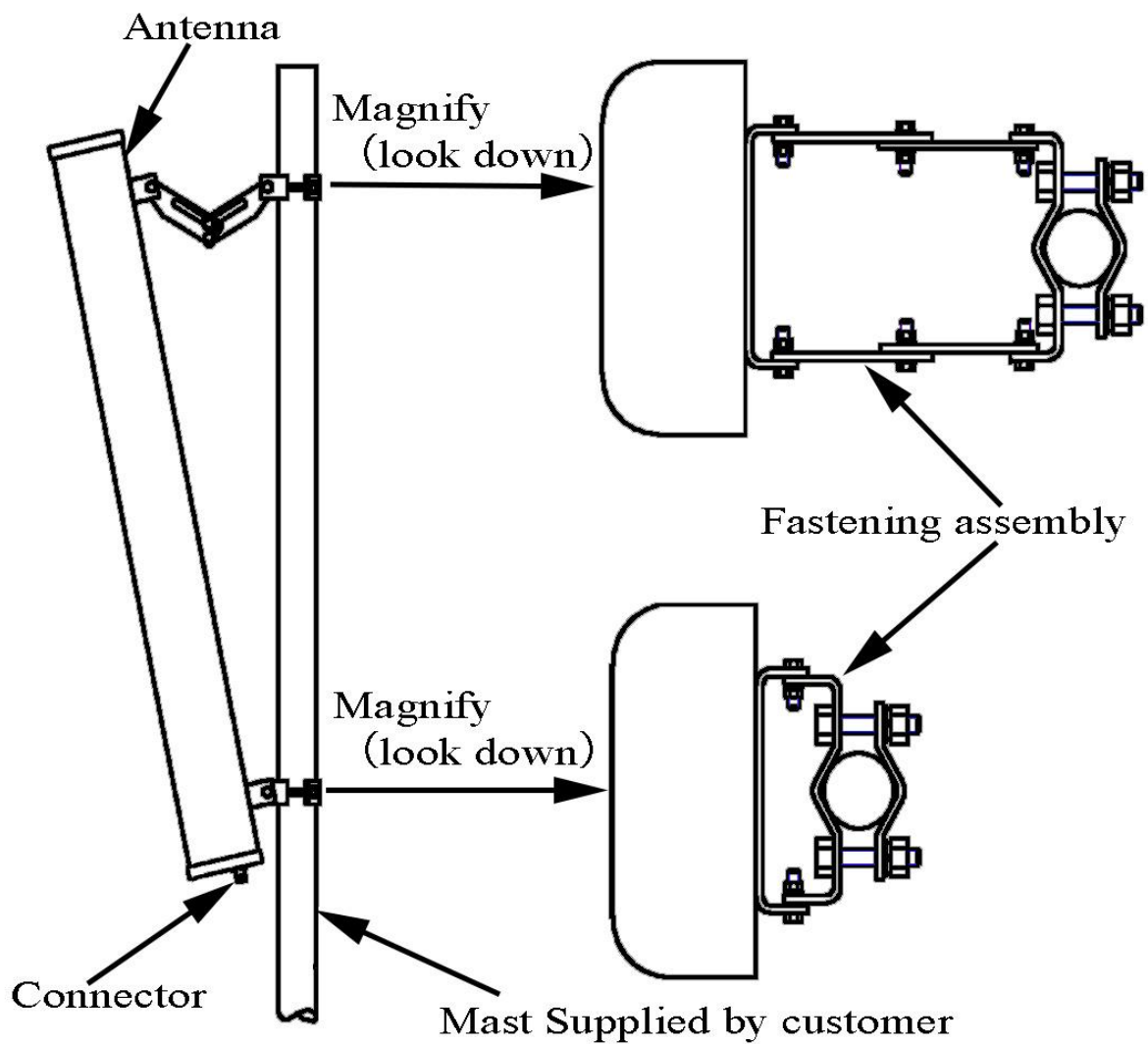
Tip: Pictures are for reference only.
Please refer to physical objects.

Electrical Specifications	
Freq.Range-MHz	902 to 928
Bandwidth-MHz	26
Polarization	Horizontal
Gain-dBi	12
Beam Electrical Downtilt-°	0
Half-power beam width-°	H:65 E:28
F/B-dB	≥ 25
Impedance-Ω	50
VSWR	≤ 1.3
Max.Power-W	100
Lightning Protection	DC Grounded

Mechanical Specifications	
Connector	N female
Connector Position	Bottom
Dimension-MM	About 650×280×125
Weight-KG	About 5.5
Radome material	UPVC
Radome color	Gray
Mechanical tilt-°	0 to 10
Operational Temperature-°C	-40 to 60
Storage Temperature-°C	-55 to 85
Relative Humidity-%	5 to 95
Rated Wind Velocity-M/S	60
Mounting way	Mast
Mast Diameter-MM	Φ50 to 75



Installation Demonstrations



Typical pattern

