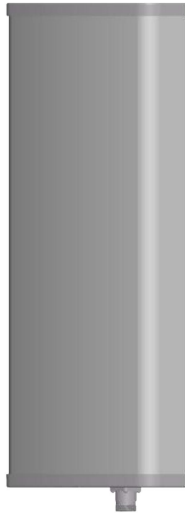




## Directional Sector Antenna



- Model: FTD-1115SH13VP120A
- Name: Directional Sector Antenna
- Freq.Range: 1100 to 1580 MHz
- Communications system: ACARS,  
Radio positioning system,  
Navigation communication system
- Application scenario:  
Point to multipoint, Base station antenna,  
Wireless data and image transmission,  
Outdoor signal directional coverage

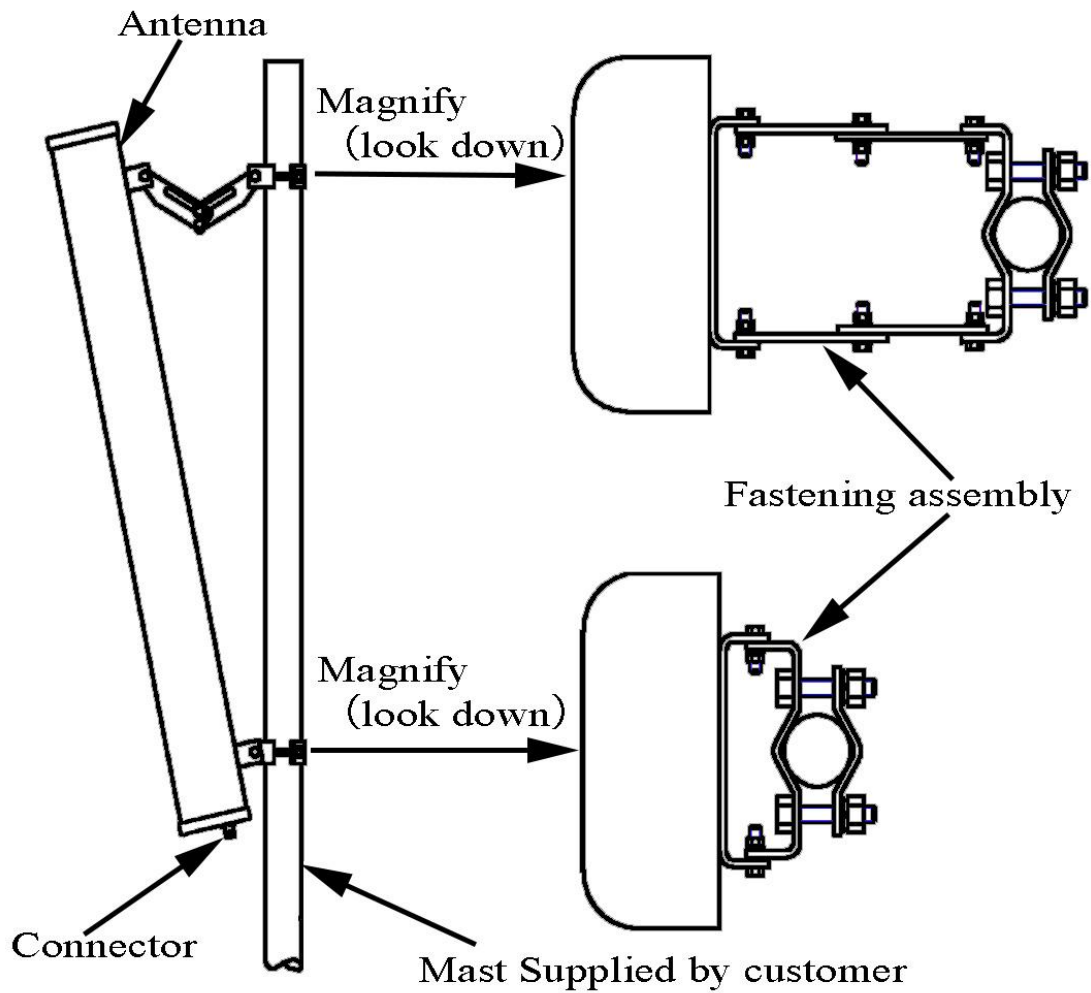
Tip: Pictures are for reference only.  
Please refer to physical objects.

Electrical Specifications	
Freq.Range-MHz	1100 to 1580
Bandwidth-MHz	480
Polarization	Vertical
Gain-dBi	13
Beam Electrical Downtilt-°	0
Half-power beam width-°	H:120 E:14
F/B-dB	≥ 18
Impedance-Ω	50
VSWR	≤ 2.5
Max.Power-W	100
Lightning Protection	DC Grounded

Mechanical Specifications	
Connector	N female
Connector Position	Bottom
Dimension-MM	About 1150×280×125
Weight-KG	About 8.5
Radome material	UPVC
Radome color	Gray
Mechanical tilt-°	0 to 10
Operational Temperature-°C	-40 to 60
Storage Temperature-°C	-55 to 85
Relative Humidity-%	5 to 95
Rated Wind Velocity-M/S	60
Mounting way	Mast
Mast Diameter-MM	Φ50 to 75



## Installation Demonstrations



## Typical pattern

