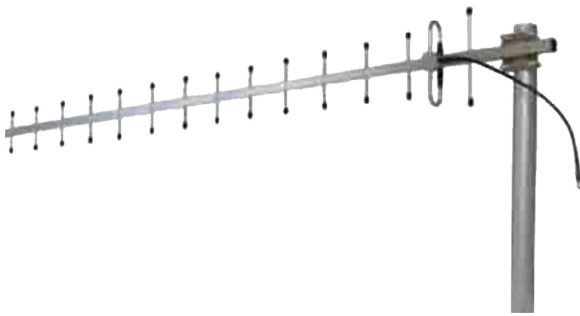




# Directional Yagi Antenna



- Model: FTD-1317BM15V15A
- Name: Directional Yagi Antenna
- Freq.Range: 1300 to 1700 MHz
- Communications system:
  - Microwave communication system
- Application scenario: Point to point,  
Point to multipoint, Client antenna,  
Long-distance communication

Tip: Pictures are for reference only.  
Please refer to physical objects.

Electrical Specifications	
Freq.Range-MHz	1300 to 1700
Bandwidth-MHz	100
Unit	15
Polarization	Vertical or Horizontal
Gain-dBi	14.5
Horizontal Beamwidth-°	30
Vertical Beamwidth-°	30
F/B-dB	≥ 16
Impedance-Ω	50
VSWR	≤ 1.5
Max.Power-W	100

Mechanical Specifications	
Connector	N female or customized
Connector Position	Cable outgoing
Length-CM	About 80
Weight-KG	About 0.65
Radome material	Aluminium alloy
Operational Temperature-°C	-40 to 60
Storage Temperature-°C	-55 to 85
Relative Humidity-%	5 to 95
Rated Wind Velocity-M/S	60
Mounting way	Mast
Mast Diameter-MM	Φ40 to 50



## Installation Demonstrations

