



# Directional Flat Panel Antenna



Tip: Pictures are for reference only.  
Please refer to physical objects.

- Model: FTD-1315PB09VH60A
- Name: Directional Flat Panel Antenna
- Freq.Range: 1300 to 1500 MHz
- Communications system:
  - Radio positioning system,
  - Navigation communication system,
  - Microwave communication system,
  - Wireless trunking communication system
- Application scenario:
  - Point to point, Point to multipoint,
  - Wireless data and image transmission,
  - Outdoor signal directional coverage

## Electrical Specifications

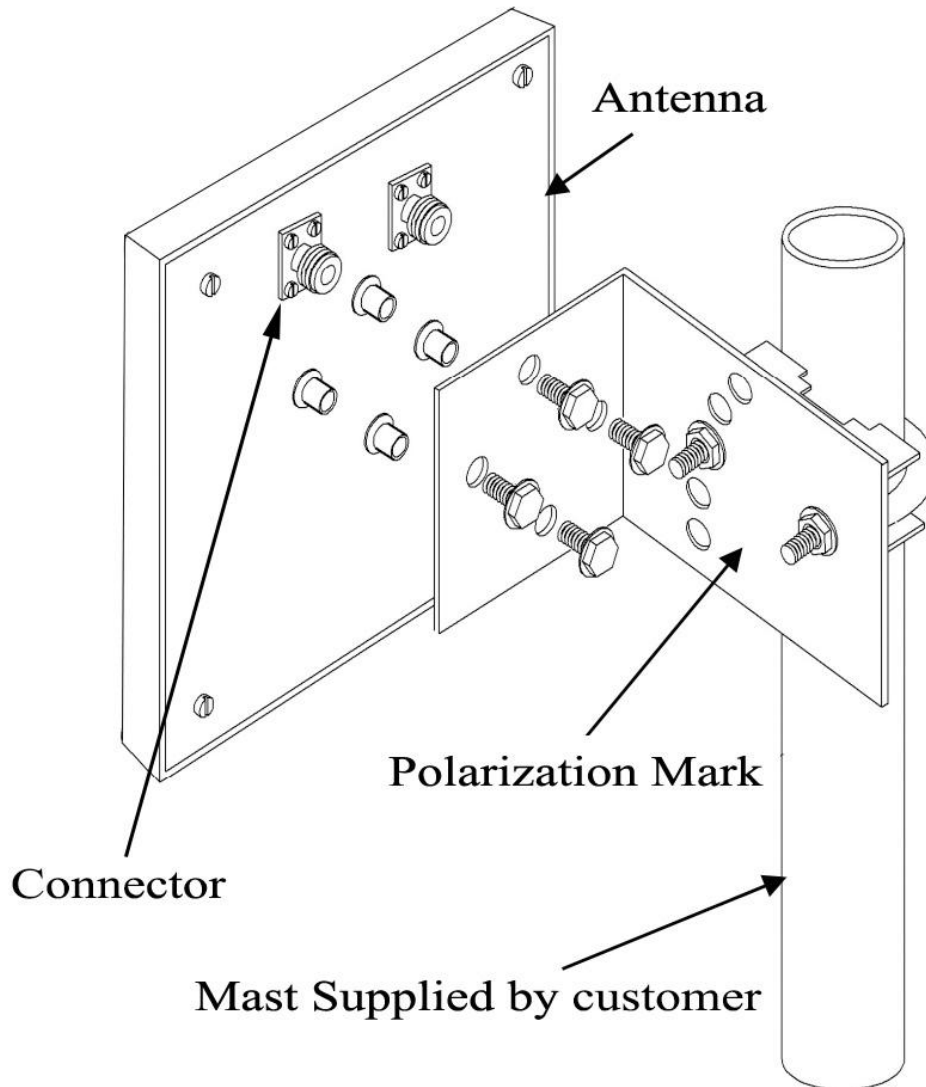
Freq.Range-MHz	1300 to 1500	
Bandwidth-MHz	100	
Polarization	Vertical and Horizontal	
Gain-dBi	9	
Beam Electrical Downtilt-°	0	
Half-power beam width-°	H:60	E:55
Cross-pol-isolation-dB	≥ 20	
F/B-dB	≥ 20	
Impedance-Ω	50	
VSWR	≤ 1.5	
Max.Power-W	50	
Lightning Protection	DC Grounded	

## Mechanical Specifications

Connector	N female	
Connector Position	Back	
Dimension-MM	About 190×190×40	
Weight-KG	About 1	
Radome material	ABS	
Radome color	White	
Mechanical tilt-°	0 to 30	
Operational Temperature-°C	-40 to 60	
Storage Temperature-°C	-55 to 85	
Relative Humidity-%	5 to 95	
Rated Wind Velocity-M/S	60	
Mounting way	Mast	
Mast Diameter-MM	Φ35 to 50	



## Installation Demonstrations



## Typical pattern

