



Directional Flat Panel Antenna



- Model: FTD-1418PB09DP60
- Name: Directional Flat Panel Antenna
- Freq.Range: 1447 to 1467 / 1785 to 1805 MHz
- Communications system:
 - Wireless access,
 - Wireless digital transmission,
 - Wireless trunking communication system
- Application scenario:
 - Point to multipoint,
 - Wireless data and image transmission,
 - Outdoor signal directional coverage

Tip: Pictures are for reference only.
Please refer to physical objects.

Electrical Specifications

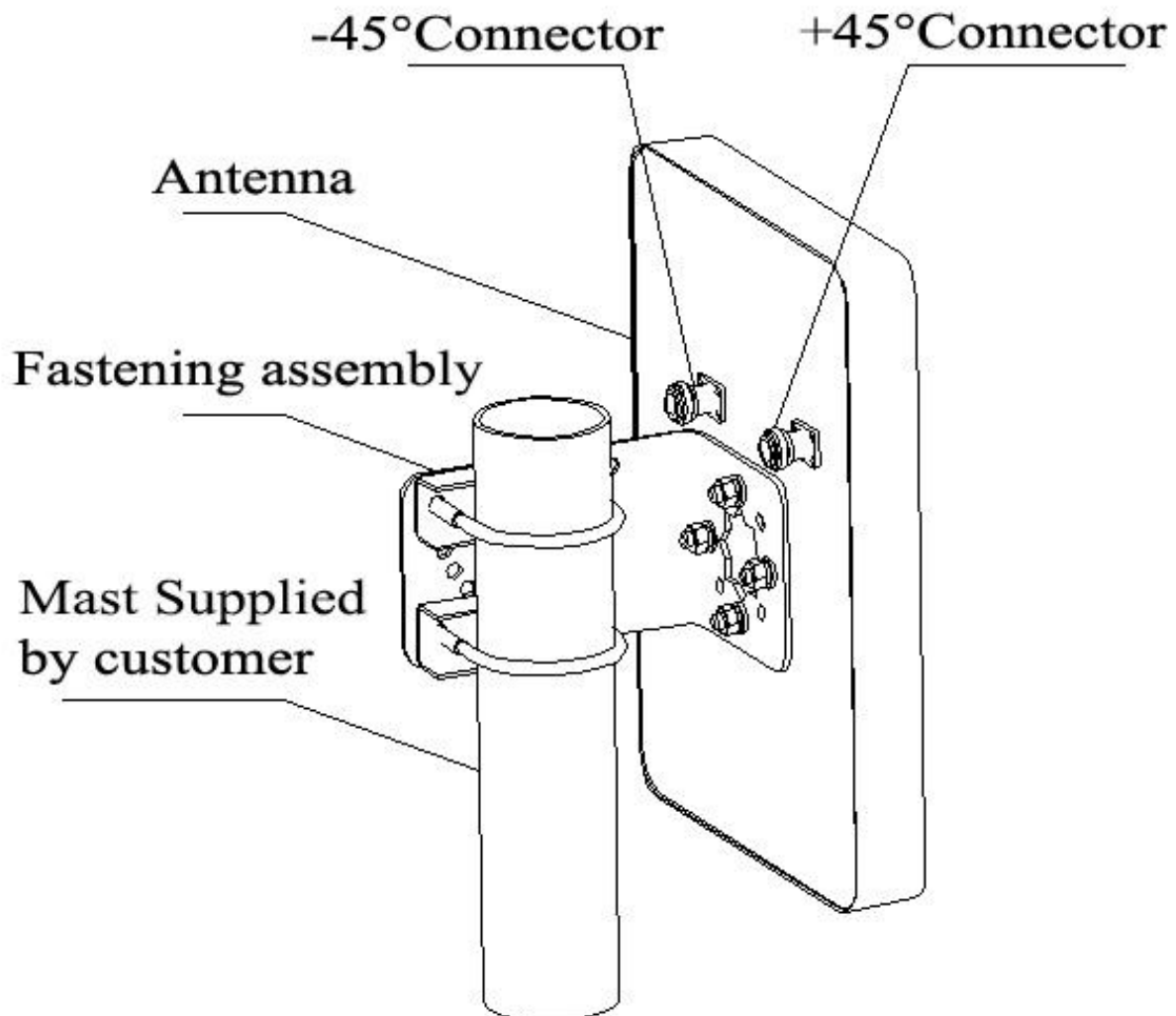
Freq.Range-MHz	1447 to 1467	1785 to 1805
Bandwidth-MHz	20	20
Polarization	±45°	
Gain-dBi	9	9
Beam Electrical Downtilt-°	0	
Half-power beam width-°	H:60 E:60	H:55 E:55
Cross-pol-isolation-dB	≥ 25	
F/B-dB	≥ 20	
Impedance-Ω	50	
VSWR	≤ 1.5	
Max.Power-W	50	
Lightning Protection	DC Grounded	

Mechanical Specifications

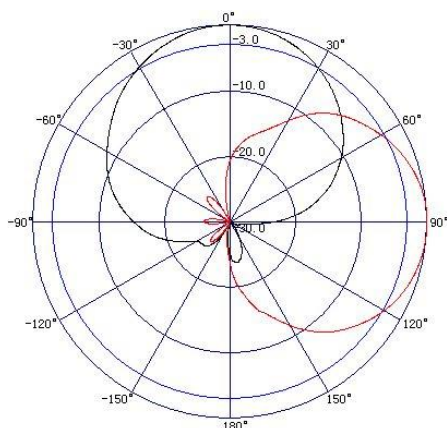
Connector	2×N female
Connector Position	Back
Dimension-MM	About 190×190×40
Weight-KG	About 1
Radome material	ABS
Radome color	White
Mechanical tilt-°	0 to 60
Operational Temperature-°C	-40 to 60
Storage Temperature-°C	-55 to 85
Relative Humidity-%	5 to 95
Rated Wind Velocity-M/S	60
Mounting way	Mast
Mast Diameter	Φ35 to 50



Installation Demonstrations



Typical pattern



Connector

