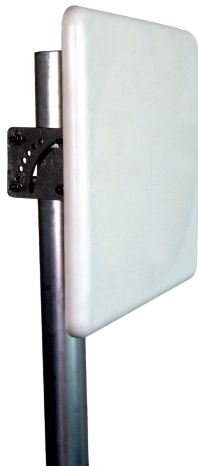




Directional Flat Panel Antenna



- Model: FTD-1416PB12V30
- Name: Directional Flat Panel Antenna
- Freq.Range: 1400 to 1600 MHz
- Communications system:
 - Microwave communication system,
 - Broadband digital trunking private network
- Application scenario:
 - Point to point, Point to multipoint,
 - Wireless data and image transmission,
 - Outdoor signal directional coverage

Tip: Pictures are for reference only.
Please refer to physical objects.

Electrical Specifications

Freq.Range-MHz	1400 to 1600
Bandwidth-MHz	100
Polarization	Vertical or Horizontal
Gain-dBi	12
Beam Electrical Downtilt-°	0
Half-power beam width-°	H:30 E:60
F/B-dB	≥ 20
Impedance-Ω	50
VSWR	≤ 1.7
Max.Power-W	50
Lightning Protection	DC Grounded

Mechanical Specifications

Connector	N female
Connector Position	Back
Dimension-MM	About 306×306×25
Weight-KG	About 1.4
Radome material	ABS
Radome color	White
Mechanical tilt-°	0 to 60
Operational Temperature-°C	-40 to 60
Storage Temperature-°C	-55 to 85
Relative Humidity-%	5 to 95
Rated Wind Velocity-M/S	60
Mounting way	Mast
Mast Diameter-MM	Φ40 to 50



Installation Demonstrations

