



Directional Flat Panel Antenna



- Model: FTD-1415PB09VH60A
- Name: Directional Flat Panel Antenna
- Freq.Range: 1400 to 1500 MHz
- Communications system:
 - Microwave communication system,
 - Broadband digital trunking private network
- Application scenario:
 - Point to point, Point to multipoint,
 - Wireless data and image transmission,
 - Outdoor signal directional coverage

Tip: Pictures are for reference only.
Please refer to physical objects.

Electrical Specifications

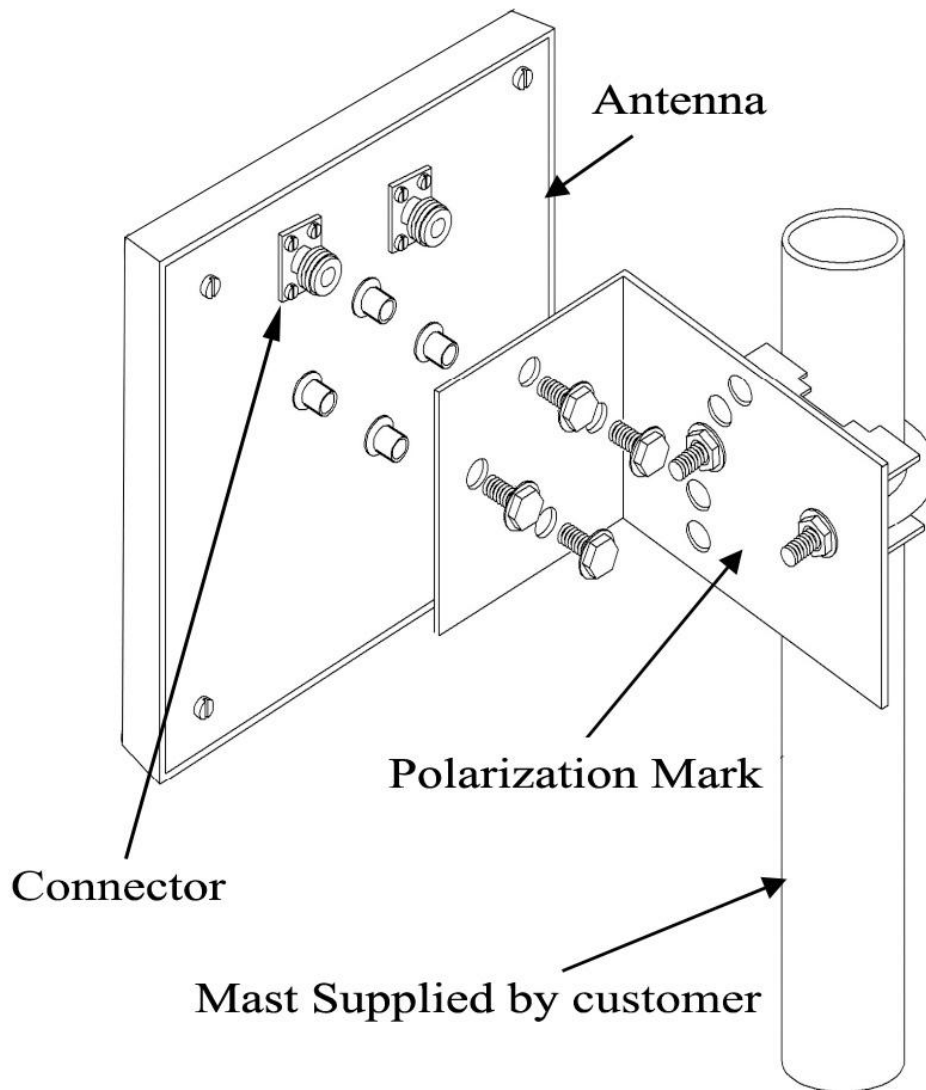
Freq.Range-MHz	1400 to 1500
Bandwidth-MHz	100
Polarization	Vertical and Horizontal
Gain-dBi	9
Beam Electrical Downtilt-°	0
Half-power beam width-°	H:60 E:55
Cross-pol-isolation-dB	≥ 20
F/B-dB	≥ 20
Impedance-Ω	50
VSWR	≤ 1.5
Max.Power-W	50
Lightning Protection	DC Grounded

Mechanical Specifications

Connector	2×N female
Connector Position	Back
Dimension-MM	About 190×190×40
Weight-KG	About 1
Radome material	ABS
Radome color	White
Mechanical tilt-°	0 to 30
Operational Temperature-°C	-40 to 60
Storage Temperature-°C	-55 to 85
Relative Humidity-%	5 to 95
Rated Wind Velocity-M/S	60
Mounting way	Mast
Mast Diameter-MM	Φ35 to 50



Installation Demonstrations



Typical pattern

