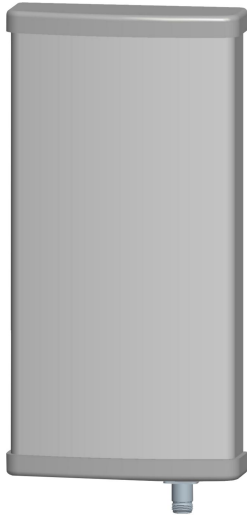




Directional Sector Antenna



- Model: FTD-1415SH15VP65C
- Name: Directional Sector Antenna
- Freq.Range: 1400 to 1500 MHz
- Communications system:
 - Broadband digital trunking private network
- Application scenario:
 - Point to multipoint, Base station antenna,
 - Wireless data and image transmission,
 - Outdoor signal directional coverage

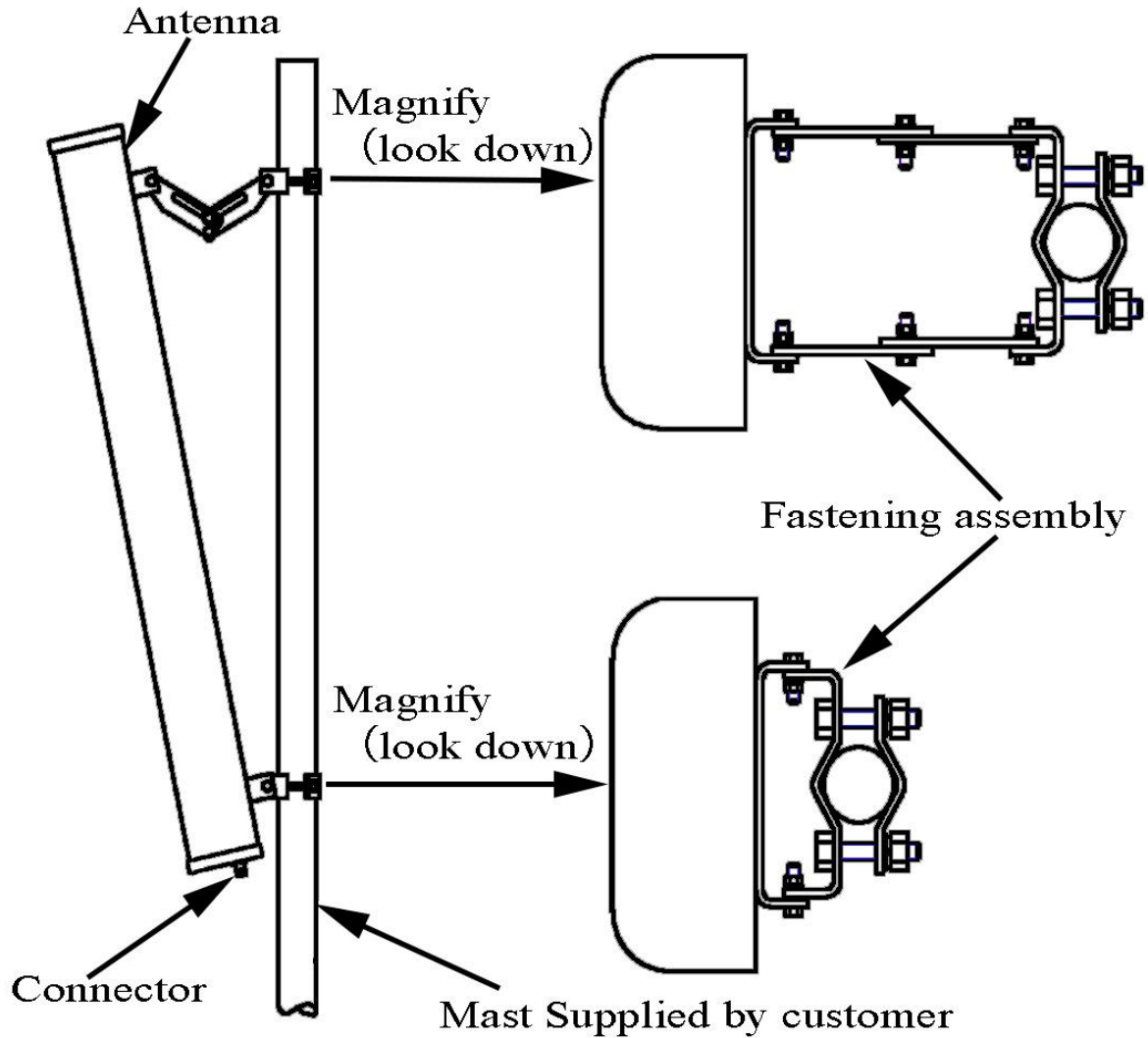
Tip: Pictures are for reference only.
Please refer to physical objects.

Electrical Specifications	
Freq.Range-MHz	1400 to 1500
Bandwidth-MHz	60
Polarization	Vertical
Gain-dBi	15
Beam Electrical Downtilt-°	0
Half-power beam width-°	H:65 E:16
F/B-dB	≥ 25
Impedance-Ω	50
VSWR	≤ 1.5
Max.Power-W	200
Lightning Protection	DC Grounded

Mechanical Specifications	
Connector	N female
Connector Position	Bottom
Dimension-MM	About 650×167×55
Weight-KG	About 3
Radome material	UPVC
Radome color	Gray
Mechanical tilt-°	0 to 15
Operational Temperature-°C	-40 to 60
Storage Temperature-°C	-55 to 85
Relative Humidity-%	5 to 95
Rated Wind Velocity-M/S	60
Mounting way	Mast
Mast Diameter-MM	Φ35 to 75



Installation Demonstrations



Typical pattern

