



Directional Sector Antenna



- Model: FTD-1415SH15DP65C
- Name: Directional Sector Antenna
- Freq.Range: 1400 to 1500 MHz
- Communications system:
 - Broadband digital trunking private network
- Application scenario:
 - Point to multipoint, Base station antenna,
 - Wireless data and image transmission,
 - Outdoor signal directional coverage

Tip: Pictures are for reference only.
Please refer to physical objects.

Electrical Specifications

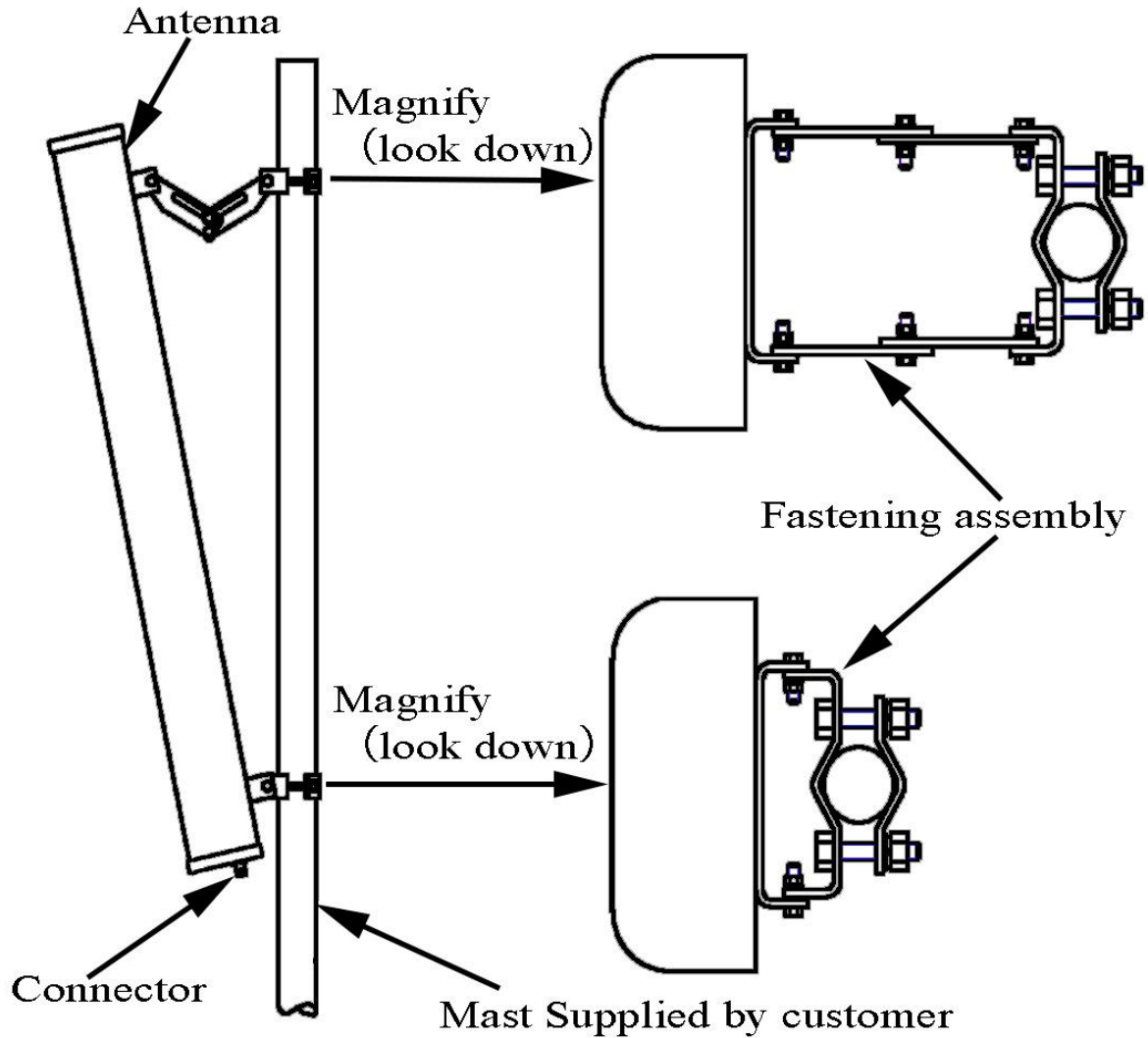
Freq.Range-MHz	1400 to 1500
Bandwidth-MHz	40
Polarization	$\pm 45^\circ$
Gain-dBi	15
Beam Electrical Downtilt- $^\circ$	0
Half-power beam width- $^\circ$	H:65 E:16
Cross-pol-isolation-dB	≥ 28
F/B-dB	≥ 25
Impedance- Ω	50
VSWR	≤ 1.5
Max.Power-W	200
Lightning Protection	DC Grounded

Mechanical Specifications

Connector	2×N female
Connector Position	Bottom
Dimension-MM	About 650×167×55
Weight-KG	About 3
Radome material	UPVC
Radome color	Gray
Mechanical tilt- $^\circ$	0 to 15
Operational Temperature- $^\circ\text{C}$	-40 to 60
Storage Temperature- $^\circ\text{C}$	-55 to 85
Relative Humidity-%	5 to 95
Rated Wind Velocity-M/S	60
Mounting way	Mast
Mast Diameter-MM	$\Phi 35$ to 75



Installation Demonstrations



Typical pattern

