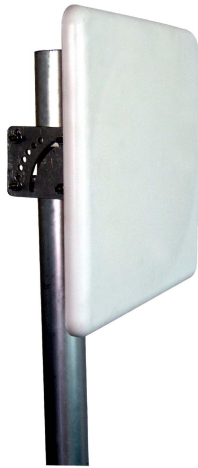




Directional Flat Panel Antenna



- Model: FTD-152458PB0912V30
- Name: Directional Flat Panel Antenna
- Freq.Range: 1575 to 1620 / 2400 to 2500 / 5150 to 5850 MHz
- Communications system:
2.4G/5.8G WLAN/WIFI/ISM,
Spread Spectrum Communication,
GPS/Navigation communication system
- Application scenario:
Point to point, Point to multipoint,
Wireless data and image transmission,
Outdoor signal directional coverage

Tip: Pictures are for reference only.
Please refer to physical objects.

Electrical Specifications			
Freq.Range-MHz	1575 to 1620	2400 to 2500	5150 to 5850
Bandwidth-MHz	45	100	700
Polarization	Vertical		
Gain-dBi	9	12	12
Horizontal Beamwidth-°	60	30	30
Vertical Beamwidth-°	60	60	60
F/B-dB	≥ 20	≥ 25	≥ 25
Impedance-Ω	50		
VSWR	≤ 1.5	≤ 1.5	≤ 2.0
Max.Power-W	50		
Lightning Protection	DC Grounded		

Mechanical Specifications	
Connector	3×N female
Connector Position	Back
Dimension-MM	About 306×306×25
Weight-KG	About 1.4
Radome material	ABS
Radome color	White
Mechanical tilt-°	0 to 60
Operational Temperature-°C	-40 to 60
Storage Temperature-°C	-55 to 85
Relative Humidity-%	5 to 95
Rated Wind Velocity-M/S	60
Mounting way	Mast
Mast Diameter-MM	Φ30 to 50



Installation Demonstrations

