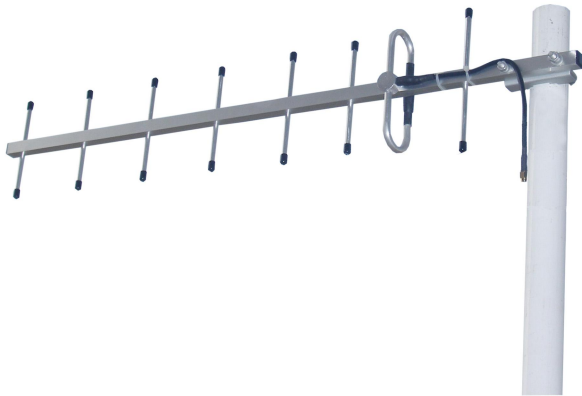




Directional Yagi Antenna



- Model: FTD-1516BM11V08A
- Name: Directional Yagi Antenna
- Freq.Range: 1500 to 1600 MHz
- Communications system:
 - Microwave communication system,
 - Remote communication
- Application scenario:
 - Point to multipoint,
 - Client antenna,
 - Long-distance communication

Tip: Pictures are for reference only.
Please refer to physical objects.

Electrical Specifications	
Freq.Range-MHz	1500 to 1600
Bandwidth-MHz	100
Unit	8
Polarization	Vertical or Horizontal
Gain-dBi	11.2
Horizontal Beamwidth-°	48
Vertical Beamwidth-°	40
F/B-dB	≥ 16
Impedance-Ω	50
VSWR	≤ 1.5
Max.Power-W	100

Mechanical Specifications	
Connector	N female or customized
Connector Position	Cable outgoing
Length-CM	About 45
Weight-KG	About 0.45
Radome material	Aluminium alloy
Operational Temperature-°C	-40 to 60
Storage Temperature-°C	-55 to 85
Relative Humidity-%	5 to 95
Rated Wind Velocity-M/S	60
Mounting way	Mast
Mast Diameter-MM	Φ40 to 50



Installation Demonstrations

